

Fuser

Several parts must be removed before you can remove the fuser. Removal procedures for the following parts are included in this section about removing the fuser:

- Fan
- Duplex-drive gears
- Duplex solenoid

Fan

1. Remove the following components.
 - Right cover. See [Right cover on page 114](#).
 - Left cover. See [Left cover on page 116](#).
 - Rear cover. See [Rear cover on page 120](#).
 - Top cover. See [Top cover on page 122](#).
 - Convenience-stapler power supply. See [Convenience-stapler power supply \(HP LaserJet 3392 only\) on page 136](#).
 - Convenience-stapler power supply bracket. See [Convenience-stapler power supply bracket and strap \(HP LaserJet 3392 only\) on page 139](#).
2. Disconnect one connector (callout 1) at the ECU and feed the wire-harness through the hole in the chassis (behind the power-switch PCA).



NOTE It might be easier to remove the wire-harness if you remove the power-switch PCA and mounting bracket. See [Power-switch PCA on page 142](#).

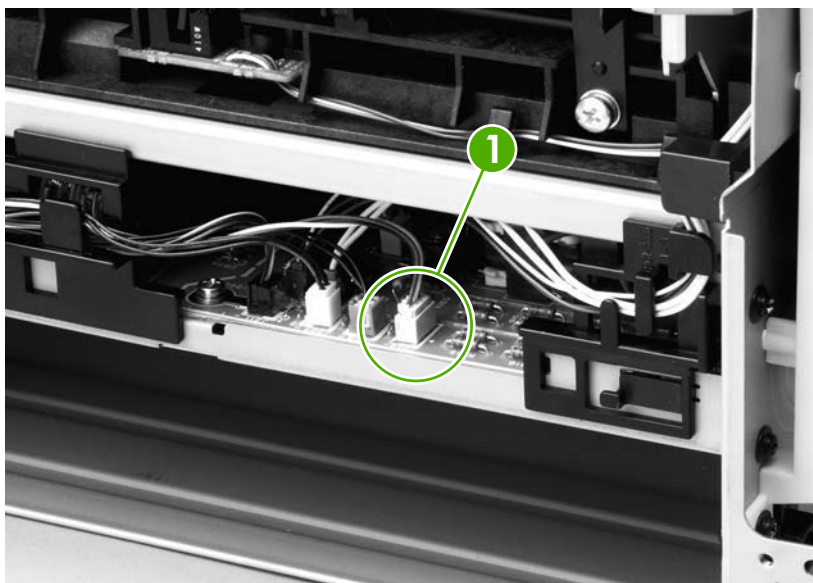


Figure 5-54 Remove the fan (1 of 2)

3. Remove two screws (callout 2) and then lift the fan off of the all-in-one.

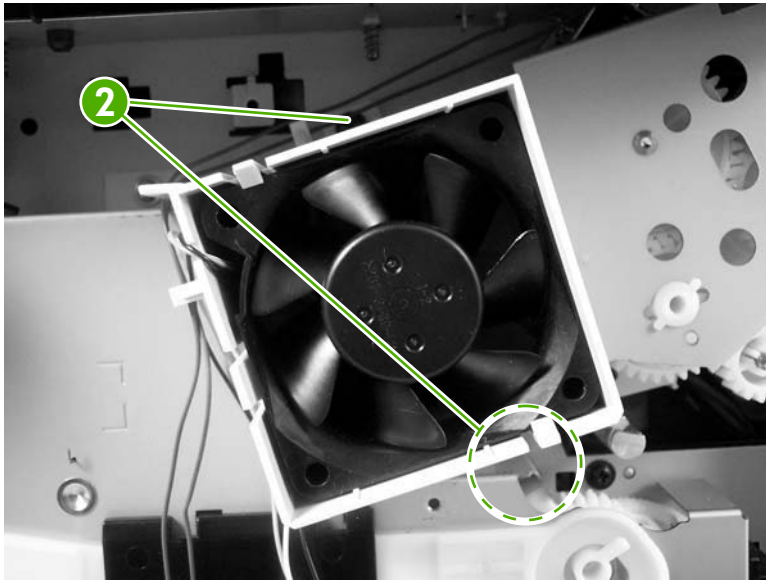


Figure 5-55 Remove the fan (2 of 2)

Duplex-drive gears

1. Remove the following components.
 - Right cover. See [Right cover on page 114](#).
 - Left cover. See [Left cover on page 116](#).
 - Rear cover. See [Rear cover on page 120](#).
 - Top cover. See [Top cover on page 122](#).
 - Convenience-stapler power supply (HP LaserJet 3392 only). See [Convenience-stapler power supply \(HP LaserJet 3392 only\) on page 136](#).
 - Convenience-stapler bracket and strap (HP LaserJet 3392 only). See [Convenience-stapler power supply bracket and strap \(HP LaserJet 3392 only\) on page 139](#).
 - Fan. See [Fan on page 152](#).
2. Remove three screws (callout 1) and then lift the assembly away from the all-in-one.



NOTE The gears are not attached to the gear plate. Carefully remove the gear plate and the gears together to prevent them from falling out of the assembly. If the gears are separated from the assembly, see to correctly reinstall them.

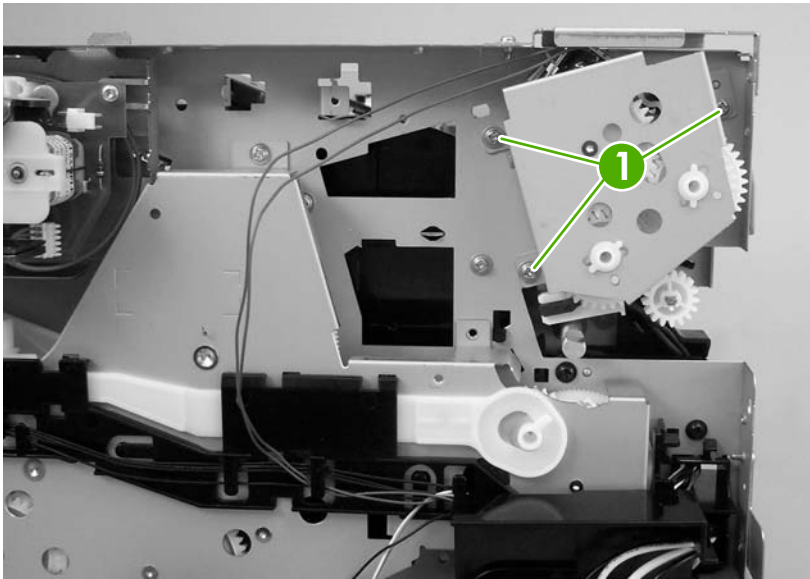


Figure 5-56 Remove the duplex-drive gears



Hint It might be easier to replace the assembly if you place the two large gear-sets into the appropriate holes on the chassis first and then line up the holes in the gear plate with the gears as you replace the plate.

Duplex solenoid

1. Remove the following components.
 - Right cover. See [Right cover on page 114](#).
 - Left cover. See [Left cover on page 116](#).
 - Rear cover. See [Rear cover on page 120](#).
 - Top cover. See [Top cover on page 122](#).
 - Convenience-stapler power supply (HP LaserJet 3392 only). See [Convenience-stapler power supply \(HP LaserJet 3392 only\) on page 136](#).
 - Convenience-stapler bracket and strap (HP LaserJet 3392 only). See [Convenience-stapler power supply bracket and strap \(HP LaserJet 3392 only\) on page 139](#).
 - Fan. See [Fan on page 152](#).
 - Duplex-drive gears. See [Duplex-drive gears on page 154](#).
2. Disconnect one connector (callout 1; J211) at the ECU. Feed the wire-harness out of the all-in-one and wire-harness guides.

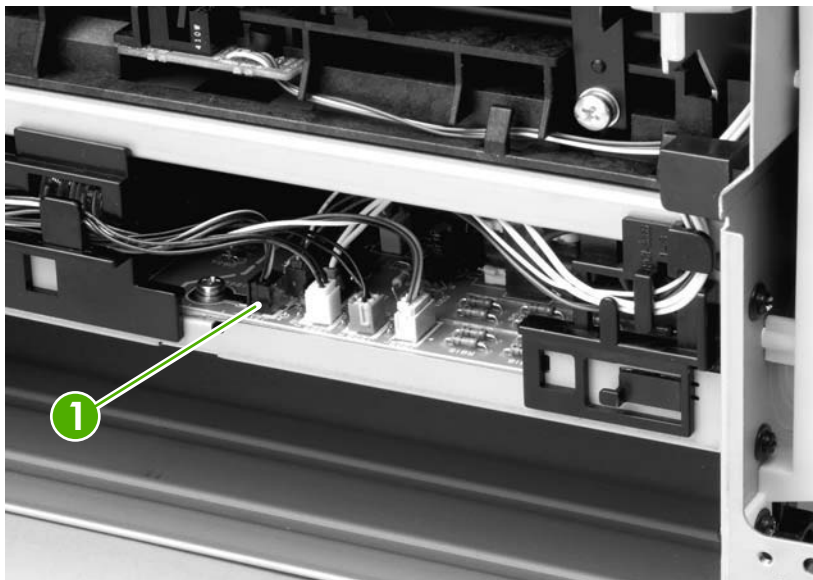


Figure 5-57 Remove the duplex solenoid (1 of 2)

3. Remove one screw (callout 2) and lift the solenoid off of the all-in-one chassis.



NOTE The solenoid lever (callout 3) is not retained. Do not lose this lever.

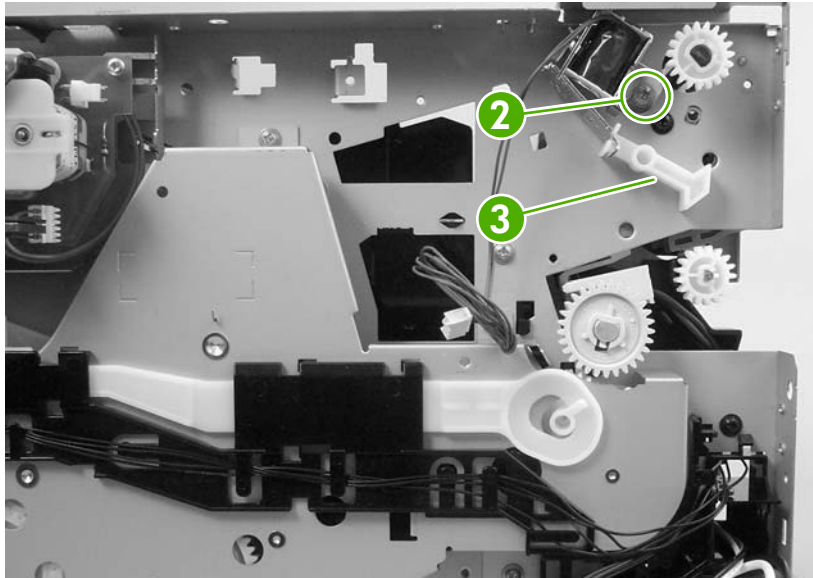


Figure 5-58 Remove the duplex solenoid (2 of 2)

Replacing the ADF pickup-roller assembly

1. Open the ADF cover.



Figure 5-19 Replacing the ADF pickup-roller assembly (1 of 6)

2. Release the ADF pickup-roller torsion spring.

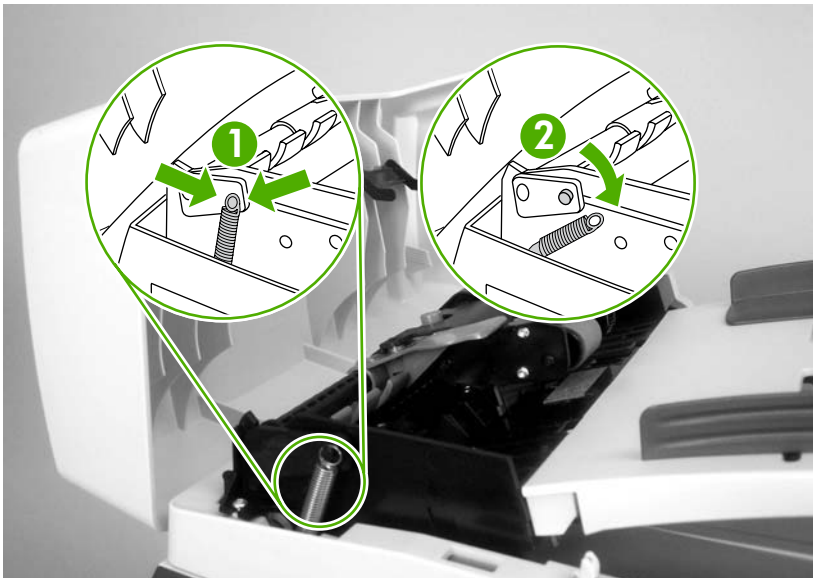


Figure 5-20 Replacing the ADF pickup-roller assembly (2 of 6)

3. Lift up the ADF pickup-roller assembly.



Figure 5-21 Replacing the ADF pickup-roller assembly (3 of 6)

4. Rotate the end of the assembly away from the ADF and then slide it out of the ADF to remove the assembly.

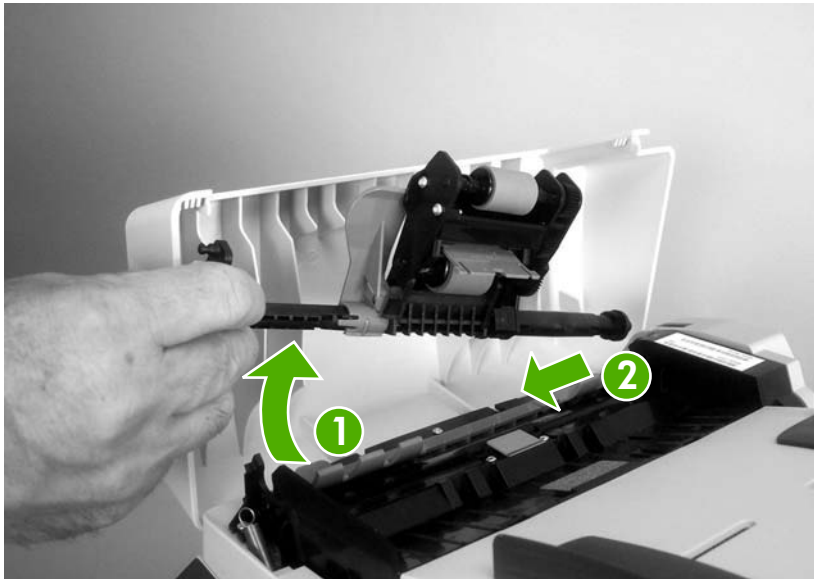


Figure 5-22 Replacing the ADF pickup-roller assembly (4 of 6)

5. Install the replacement assembly.

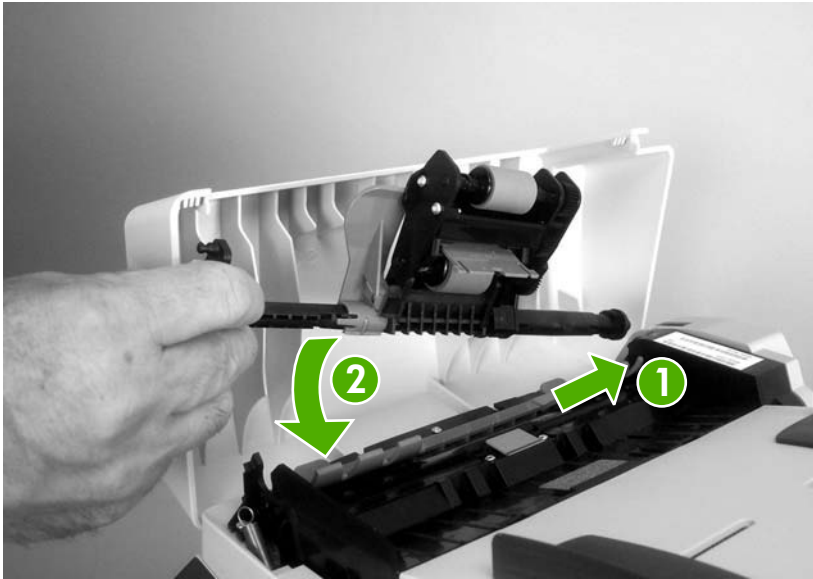


Figure 5-23 Replacing the ADF pickup-roller assembly (5 of 6)

6. Reattach the ADF pickup-roller tension spring and close the ADF cover.

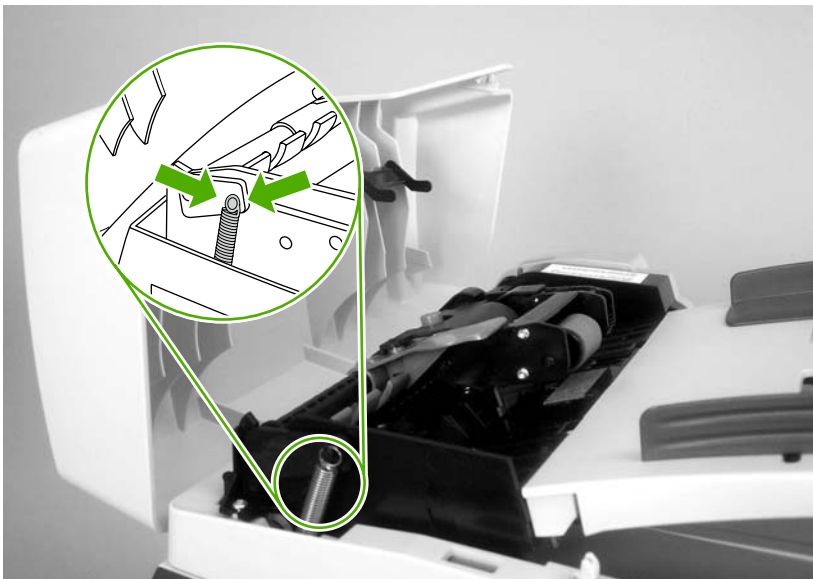


Figure 5-24 Replacing the ADF pickup-roller assembly (6 of 6)