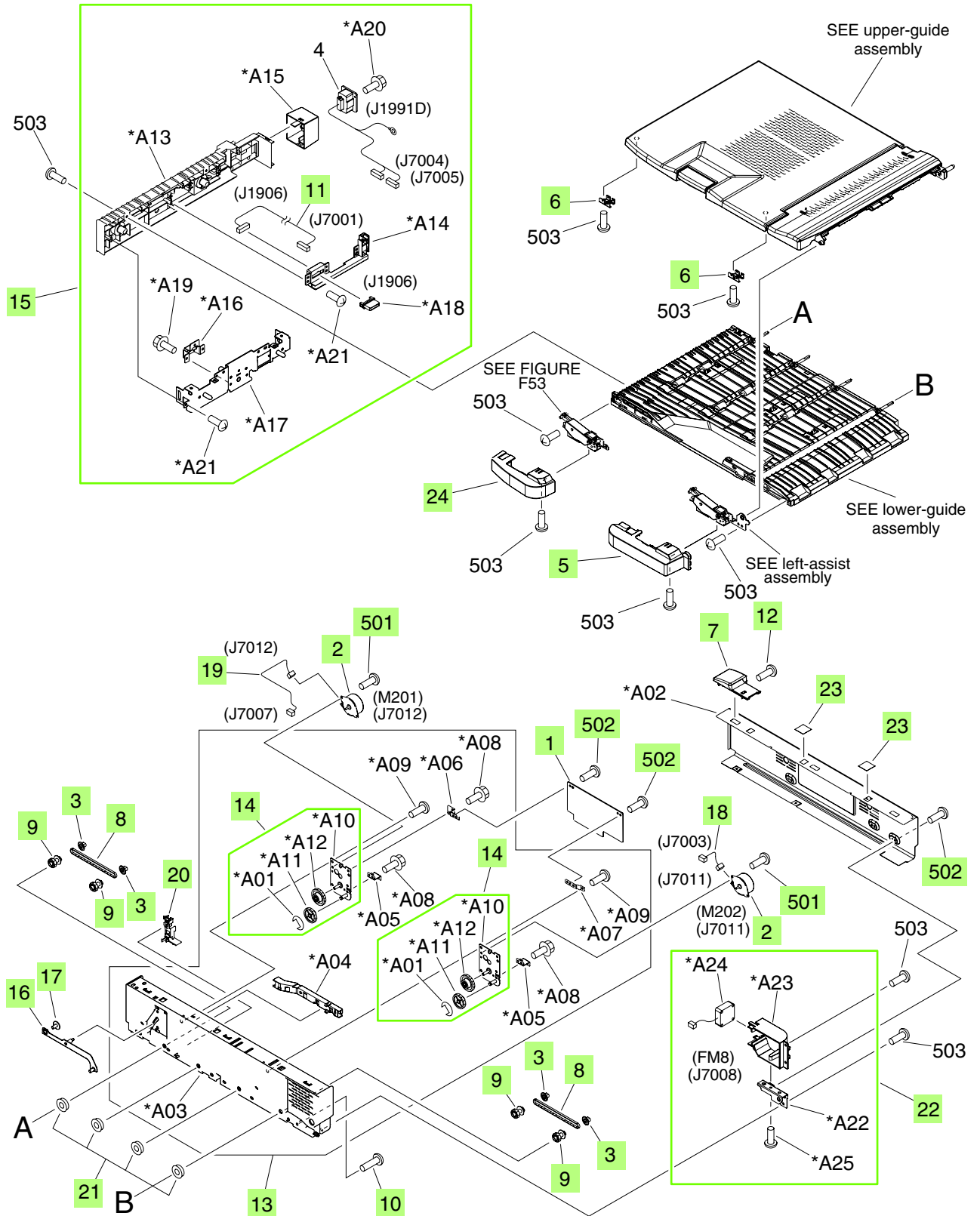


# Output-accessory devices


## Intermediate paper-transfer unit (IPTU)

Figure 9-29 Intermediate-feed main body



**Table 9-28 Intermediate-feed main body**

Ref	Description	Part number	Qty
1	Intermediate paper-transfer unit (IPTU)-driver PCA assembly	RM1-3559-000CN	1
2	Motor, stepping, DC	RK2-1320-000CN	2
3	Flange, pulley	RC1-9620-000CN	4
4	Cable, drawer	RM1-3561-000CN	1
5	Cover, assist, right	RC1-9706-000CN	1
6	Plate, assist-arm cap	RC1-9695-000CN	1
7	Cover, rear-upper	RC1-9703-000CN	1
8	Belt, paper-feed, cogged	RC1-9674-000CN	2
9	Pulley/gear, 22T	RU5-0868-000CN	4
10	Screw, M4x14	XA9-1292-000CN	5
11	Cable, drawer	RM1-3560-000CN	1
12	Screw, RS M3x8	XA9-1500-000CN	8
13	Side-cover assembly	RM1-3683-000CN	1
14	Drive-belt assembly	RM1-3684-000CN	2
15	Fin-lock assembly	RM1-3685-000CN	1
16	Arm, auxiliary	RL1-1272-000CN	1
17	Screw, B, M4x8	XA9-1277-000CN	8
18	Cable, motor	RM1-3563-000CN	1
19	Cable, motor	RM1-3564-000CN	1
20	Guide, cable, 2	RC1-9688-000CN	1
21	Bushing	RC1-4585-000CN	4
22	Fan assembly	RM1-4394-000CN	1
23	Sheet, blanking	RC1-9687-000CN	2
24	Cover, assist, left	RC1-9705-000CN	1
501	Screw, machined, truss-head, M3x4	XB1-2300-407CN	4
502	Screw, with washer, M3x6	XB2-8300-607CN	5

 **NOTE:** Only highlighted parts are orderable.