

Figure 9-6 Printer internal components (3 of 7)

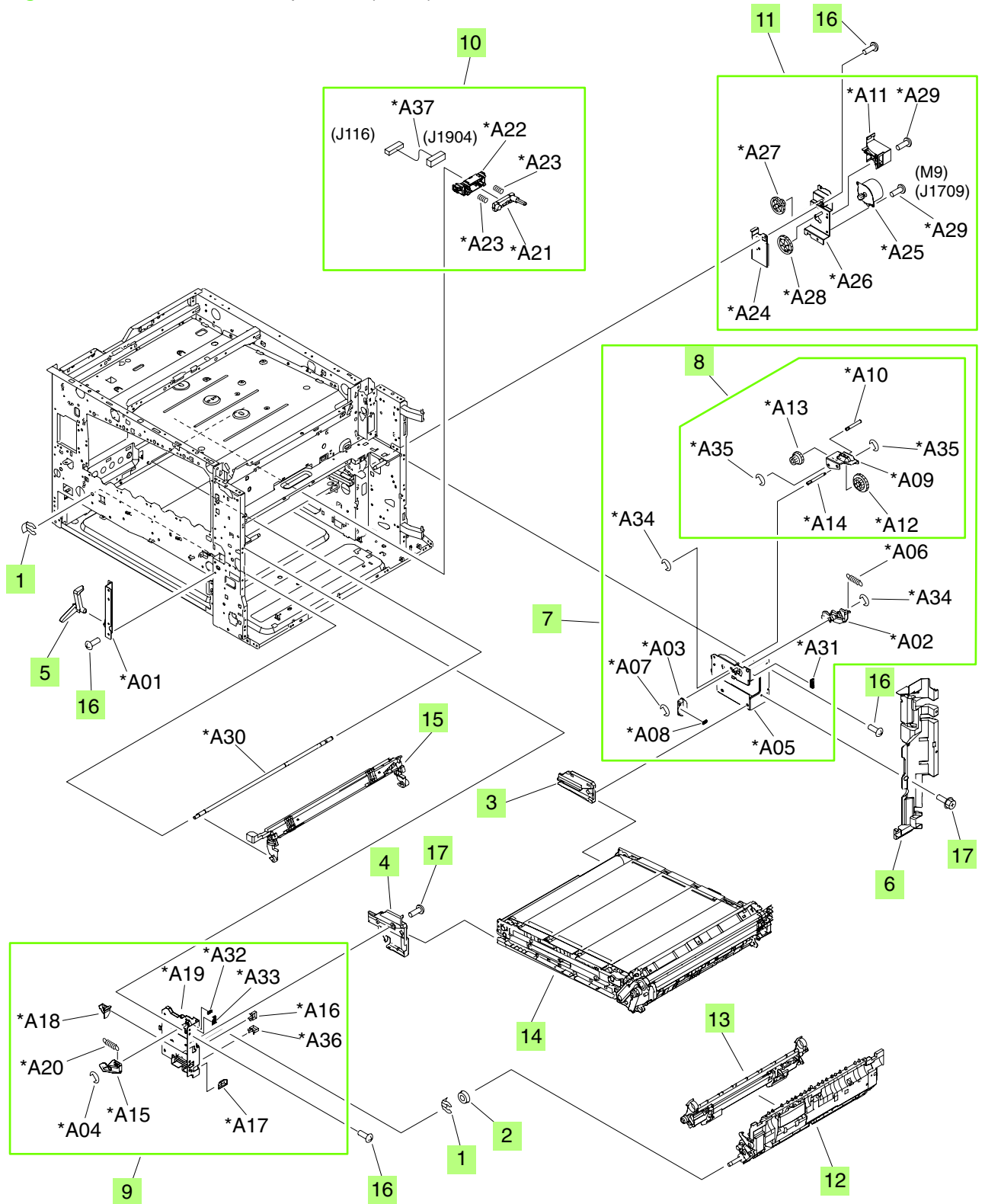



Table 9-6 Printer internal components (3 of 7)

| Ref | Description | Part number | Qty |
|-----|--|----------------|-----|
| 1 | Retainer | RC1-8511-000CN | 2 |
| 2 | Bushing | RC1-8734-000CN | 1 |
| 3 | Guide, intermediate transfer belt (ITB)-entrance, rear | RC1-9186-000CN | 1 |
| 4 | Guide, intermediate transfer belt (ITB)-entrance, front | RC1-9185-000CN | 1 |
| 5 | Arm, 1st-estrangement | RC1-9189-000CN | 1 |
| 6 | Cover, internal, right | RC1-9348-000CN | 1 |
| 7 | Intermediate transfer belt (ITB) lock-support rear assembly | RM1-3215-000CN | 1 |
| 9 | Intermediate transfer belt (ITB) lock-support front assembly | RM1-3228-000CN | 1 |
| 10 | Intermediate transfer belt (ITB)-drawer assembly | RM1-3240-000CN | 1 |
| 11 | Intermediate transfer belt (ITB) estrangement-drive assembly | RM1-3280-000CN | 1 |
| 12 | Registration 2nd-transfer assembly kit with service document | Q3931-67909 | 1 |
| 13 | 2nd-transfer-roller assembly kit | Q3931-67910 | 1 |
| 14 | Intermediate transfer belt (ITB) assembly kit | Q3931-67908 | 1 |
| 15 | Color-plane-registration (CPR) sensor assembly | RM1-3258-000CN | 1 |
| 16 | Screw, RS, M3x6 | XA9-1495-000CN | 10 |
| 17 | Screw, RS, M3x8 | XA9-1504-000CN | 1 |

 **NOTE:** Only highlighted parts are orderable.