

Covers (M681 and M682)

Figure 2-3 Covers (M681 and M682)

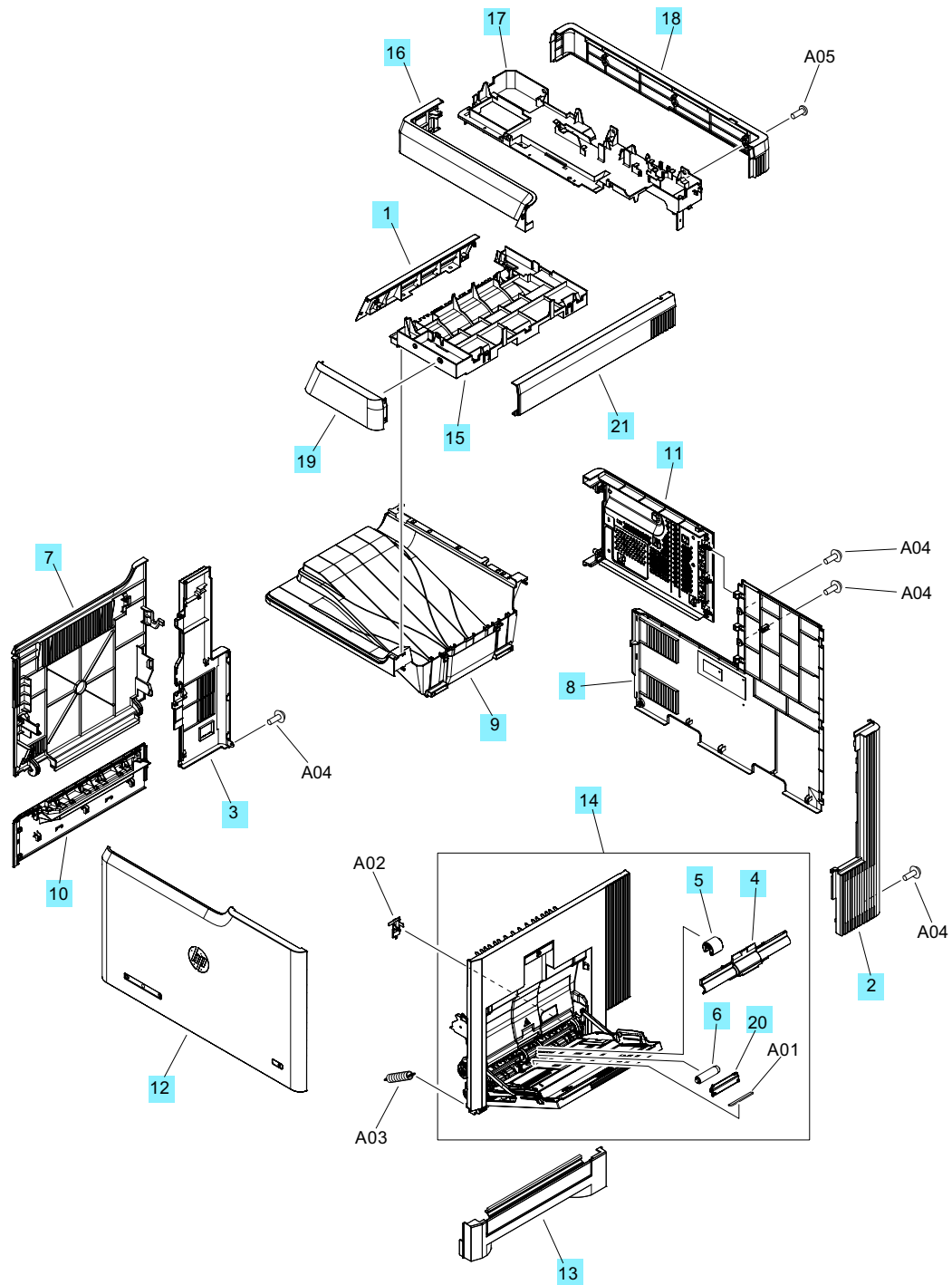


Table 2-3 Covers (M681 and M682)

Ref	Description	Part number	Qty
1	Cover, top	RC4-6865-000CN	1
2	Cover, right rear	RC4-6425-000CN	1
3	Cover, left rear	RC4-6858-000CN	1
4	Cover, Tray 1 roller	RC4-7318-000CN	1
5	Roller, pickup, Tray 1	RL2-0034-000CN	1
6	Roller, separation, Tray 1	RL2-0079-000CN	1
7	Door, left	RL2-1500-000CN	1
8	Rear cover assembly	RM2-1951-000CN	1
9	Output bin assembly	RM2-1953-000CN	1
10	Left handle assembly	RM2-1958-000CN	1
11	Formatter cover assembly	RM2-6657-000CN	1
12	Front door assembly	RM2-6658-000CN	1
13	Right handle assembly	RM2-6659-000CN	1
14	Right door assembly	RM2-6622-000CN	1
15	Cover, output bin	RC4-6859-000CN	1
16	Cover, front	RC4-6860-000CN	1
17	Cover, main	RC4-6861-000CN	1
18	Cover, rear	RC4-6862-000CN	1
19	Cover, output bin, front	RC5-1842-000CN	1
20	Guide, NIP	RC5-1892-000CN	1
21	Cover, right	RC5-1843-000CN	1