

Internal assemblies (2 of 8)

Figure 2-17 Internal assemblies (2 of 8)

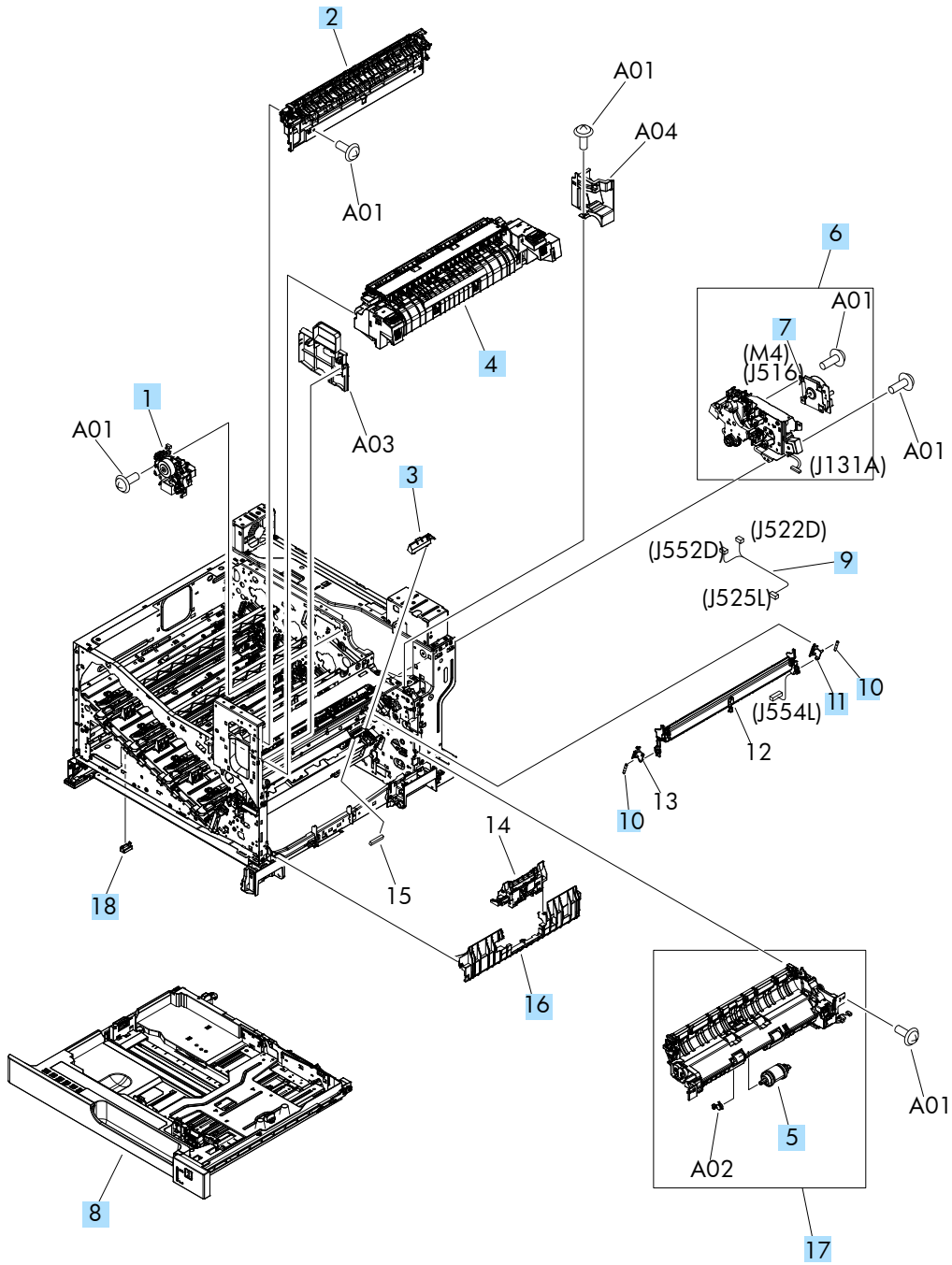


Table 2-20 Internal assemblies (2 of 8)

Ref	Description	Part number	Qty
1	Reverse drive assembly	RM2-0698-000CN	1
2	Paper delivery assembly	RM1-9377-000CN	1
3	Cover, cable, protective	RC2-6832-000CN	1
4	Kit, fuser replacement 110V	CC522-67904	1
4	Kit, fuser replacement 220V	CC522-67926	1
5	Kit, paper pick roller and separation roller	CC522-67927	1
6	Kit, fuser drive assembly	CE707-67904	1
7	Motor, fixing (fuser)	RM1-6074-000CN	1
8	Kit, Tray 2	CE522-67913	1
9	Cable, SB joint	RM1-6867-000CN	1
10	Spring, tension	RU6-2710-000CN	2
11	Support, frame	RC2-7197-000CN	1
12	Sensor, registration	RM1-7922-000CN	1
13	Support, frame	RC2-7196-000CN	1
15	Connector, snap tight, BK	VS1-7207-019CN	1
16	Guide, paper feed	RC2-7297-000CN	1
17	Paper pickup assembly (Tray 2)	CE522-67903	1
18	Cover, connector, lower	RC2-6642-000CN	1
Not shown	Guide	RC2-6551-000CN	1