

Internal assemblies (5 of 8)

Figure 2-20 Internal assemblies (5 of 8)

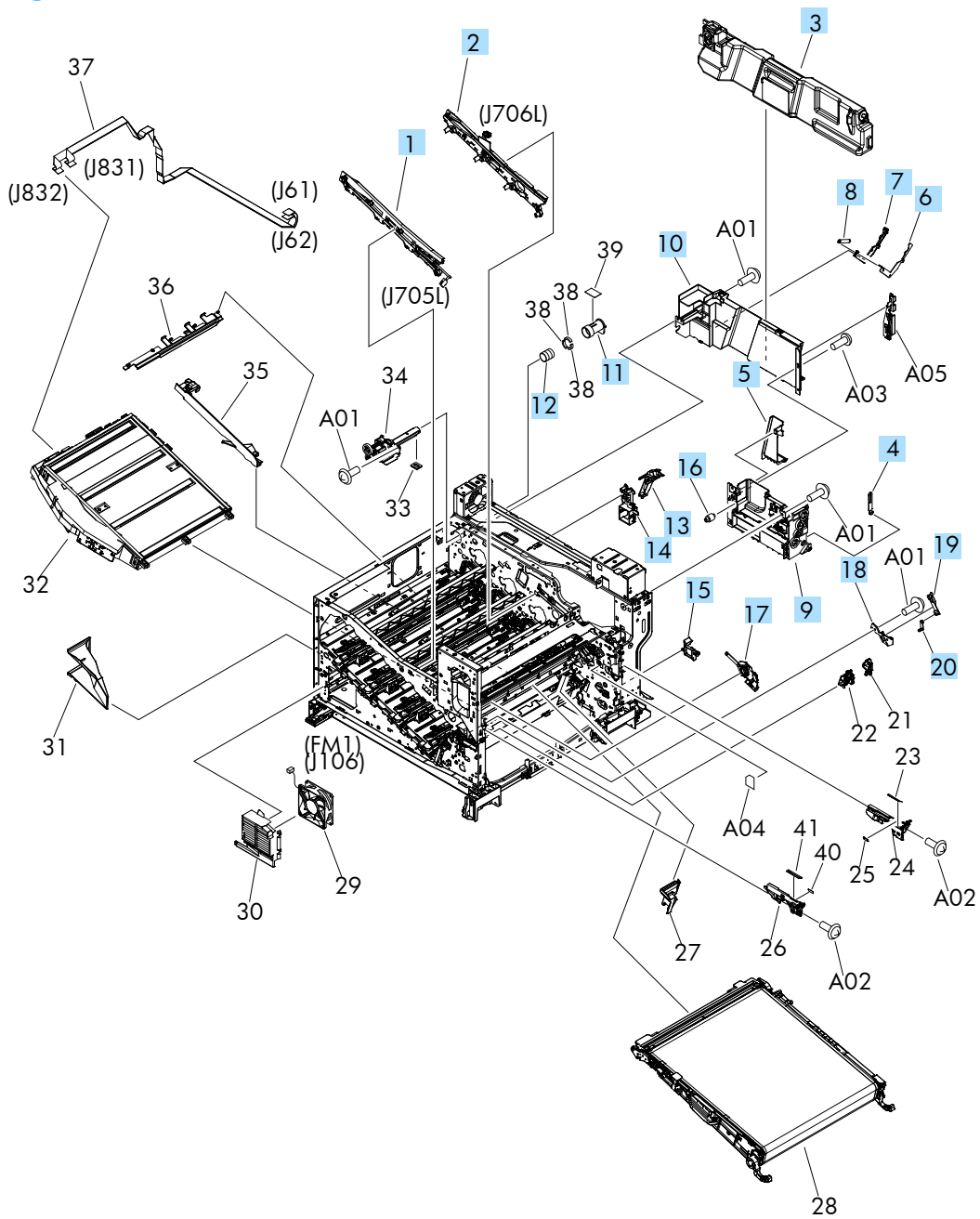


Table 2-23 Internal assemblies (5 of 8)

Ref	Description	Part number	Qty
1	ITB guide rail assembly	RM1-6018-000CN	1
2	ITB guide rail assembly, R1	RM1-6037-000CN	1
3	Kit, toner collection unit (TCU)	CE980-67901	1
4	Arm, waste toner, left	RC2-7035-000CN	1
5	Cover, waster toner, 3	RC2-6963-000CN	1
6	Plate, arm reinforcement	RC2-9649-000CN	1
7	Arm, waste toner, right	RC2-7036-000CN	1
8	Spring, tension	RU6-2831-000CN	1
9	Cover, waste toner	RM1-6012-000CN	1
10	Cover, waste toner 2	RC2-6962-000CN	1
11	Shutter, exhaust	RC2-7010-000CN	1
12	Spring, compression	RU6-2683-000CN	1
13	Guide, fixing (fuser) AC cable	RC2-6693-000CN	1
14	Guide, LVT cable	RC2-6662-000CN	1
15	Clamp, edge	RC2-6663-000CN	1
16	Gear, link worm	RU6-0795-000CN	1
17	ITB guide rail	RM1-6019-000CN	1
18	Guide, slide	RC2-7203-000CN	1
19	Slider, push	RC2-7201-000CN	1
20	Lever, lift 1	RC2-7199-000CN	1