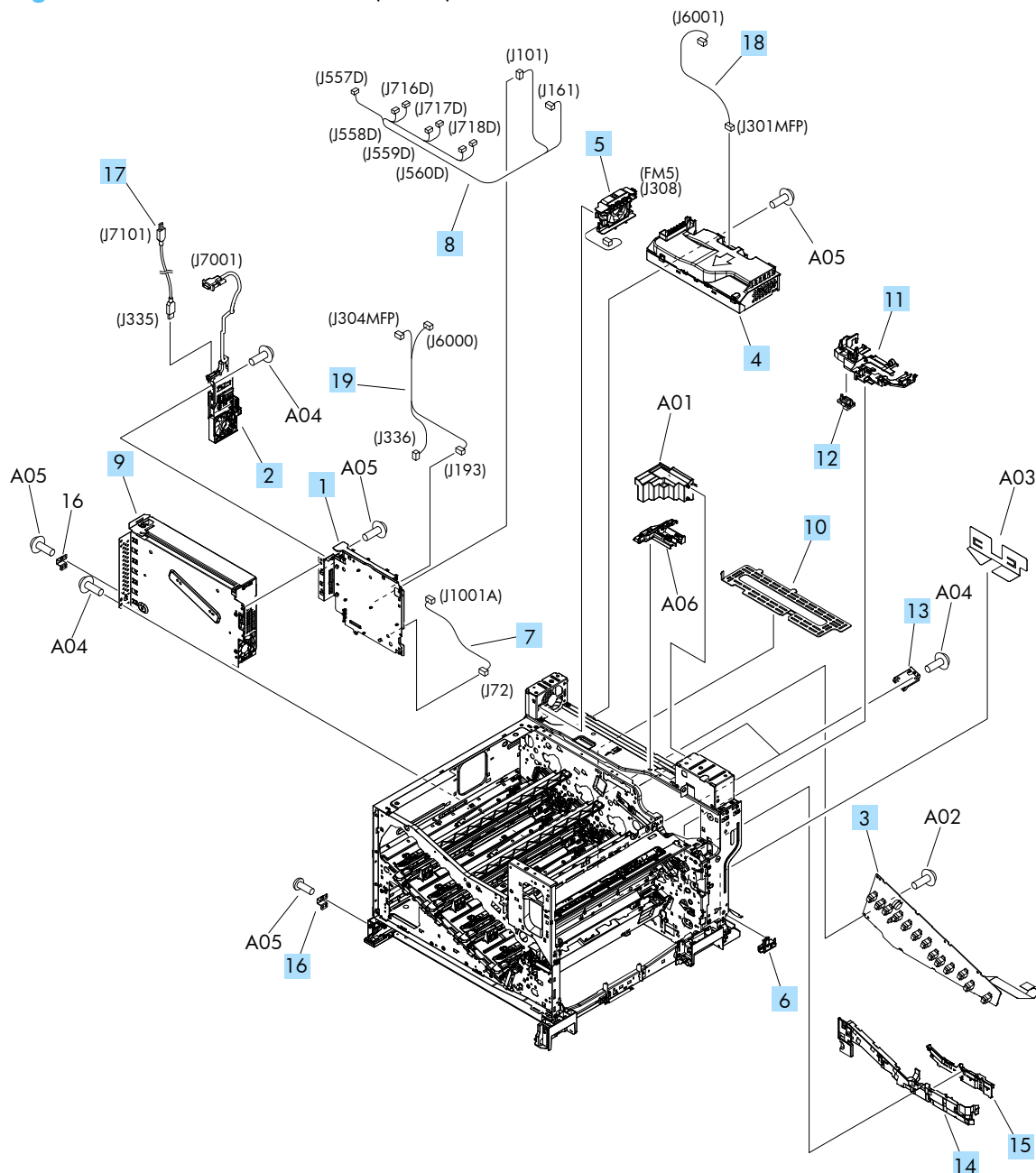


## Internal assemblies (8 of 8)

**Figure 2-23** Internal assemblies (8 of 8)



**Table 2-26 Internal assemblies (8 of 8)**

<b>Ref</b>	<b>Description</b>	<b>Part number</b>	<b>Qty</b>
1	DC controller PCA	RM1-9371-000CN	1
2	Interconnect PCA (ICB) (inner connecting PCA)	RM1-9368-000CN	1
3	Imaging high-voltage PCA assembly	RM1-6800-000CN	1
4	Sub power supply	RM1-9366-000CN	1
5	Sub power supply fan (FM5)	RM1-9384-000CN	1
6	Guide, DC controller, support cable	RC2-6665-000CN	1
7	Cable, 1st transfer	RM1-6822-000CN	1
8	Cable, rear	RM1-6863-000CN	1
9	Formatter cage	RM1-9382-000CN	1
Not shown	Kit, formatter replacement PCA	CC522-67901	1
10	Plate, FFC protective	RC2-9687-000CN	1
11	Holder, paper pickup connector	RC2-6638-000CN	1
12	Connector, 8P	VS1-7514-008CN	1
13	Plate, box pillar	RC2-6673-000CN	2
14	Guide, imaging H.V.T. cable	RC2-6661-000CN	1
15	Cover, imaging H.V.T. cable	RC2-6573-000CN	1
16	Crossmember, cover, left	RC2-6760-000CN	2
17	Cable, USB	RK2-4329-000CN	1
18	Cable assembly, sub power supply	RM1-8905-000CN	1
19	Cable assembly, stacker	RM1-8906-000CN	1