

Internal assembly

Internal assembly

Figure 3-3 Internal assembly

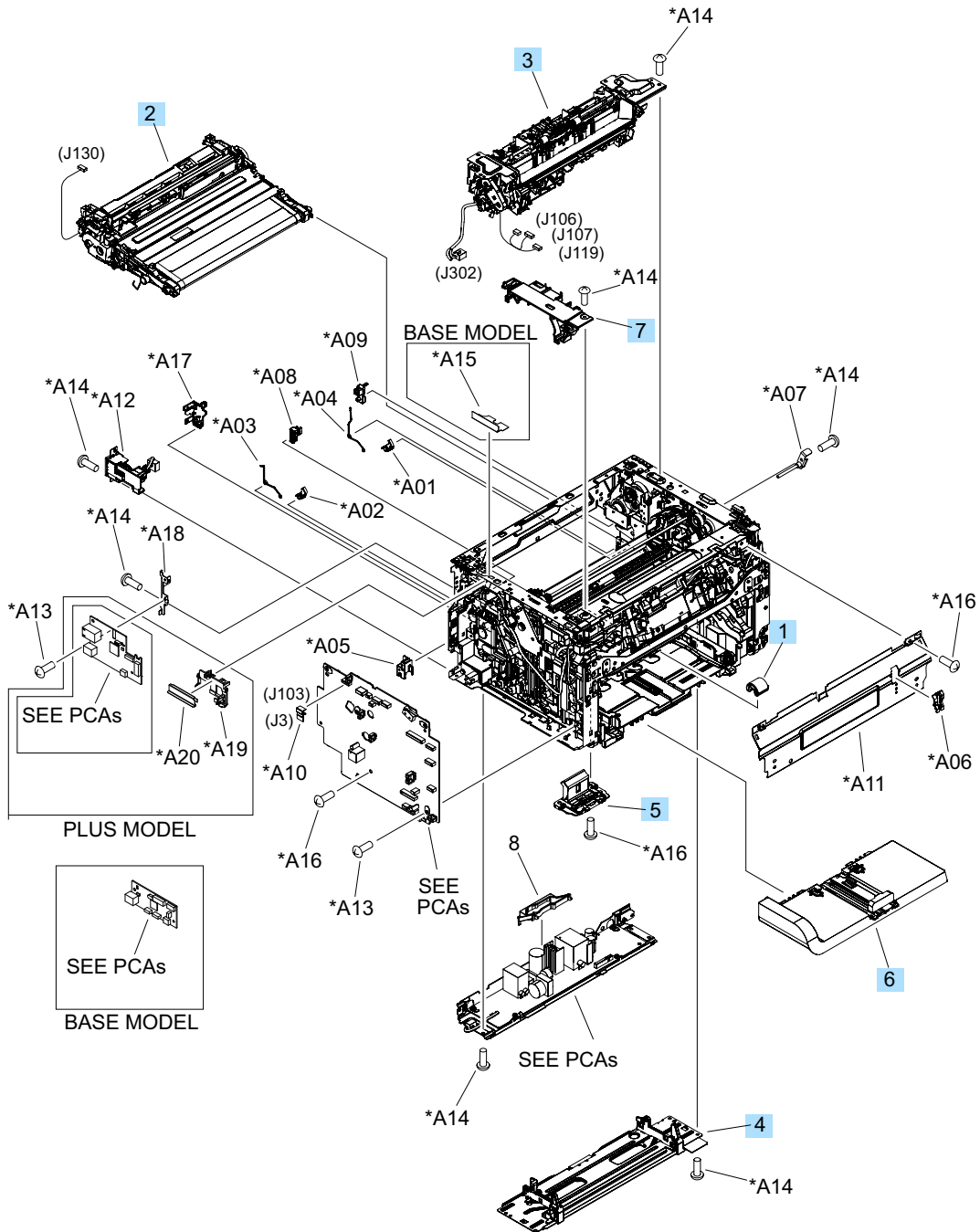


Table 3-7 Internal assembly)

Ref	Description	Part number	Qty
1	Roller, pickup	RL1-2671-000CN	1
2	Intermediate transfer belt assembly (ITB)	RM1-7274-000CN	1
3	Delivery assembly, fuser (110-127 V)	RM1-7211-000CN	1
3	Delivery assembly, fuser (220 V)	RM1-7269-000CN	1
4	Plate, base	RM1-7213-000CN	1
5	Pad, separation	RM1-7228-000CN	1
6	Tray, main assembly	RM1-7276-000CN	1
7	Cover, inner	RM1-7218-000CN	1