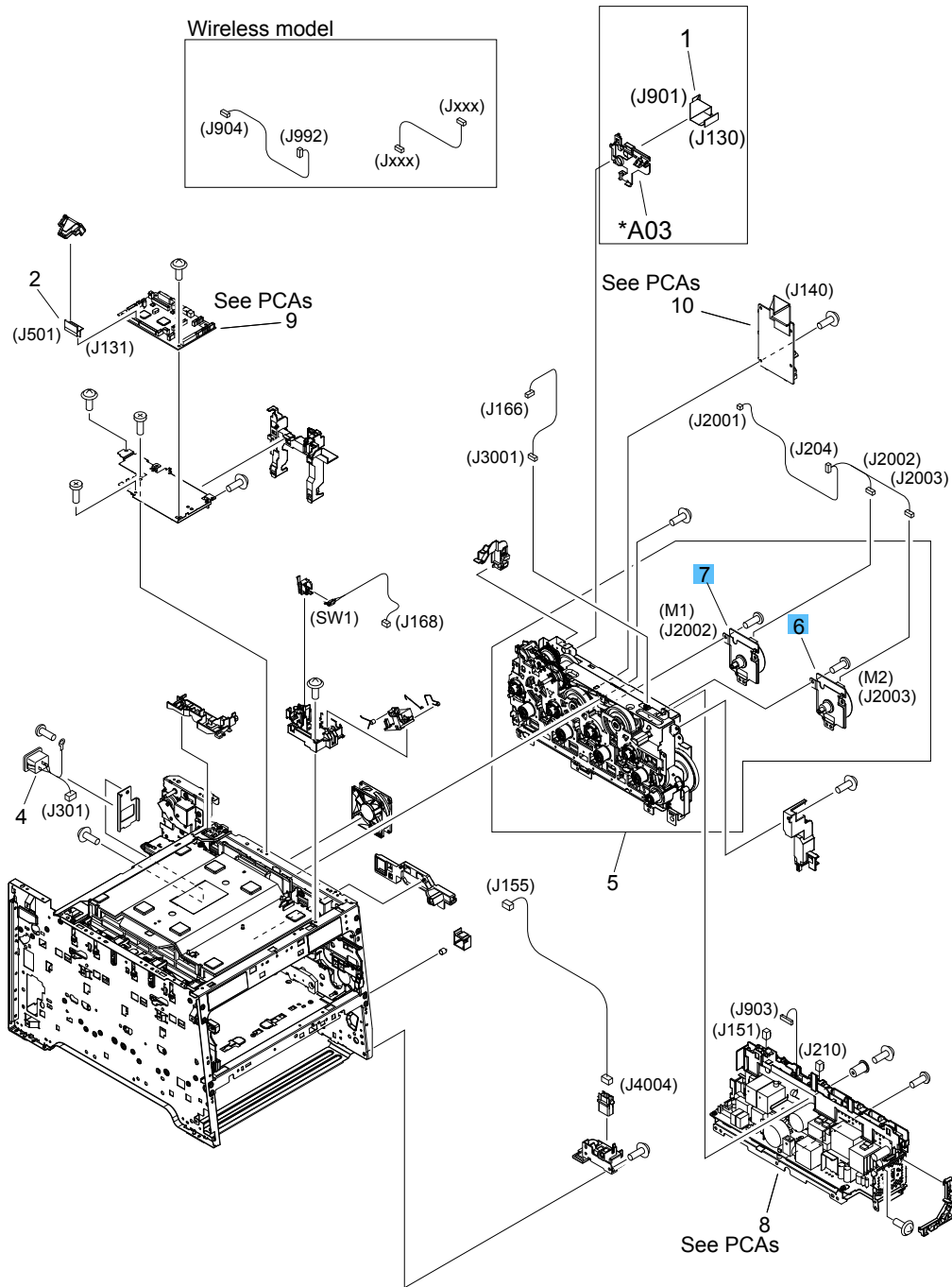


# Internal assemblies (4 of 5)

Figure 3-6 Internal assemblies (4 of 7)



**Table 3-11** Internal assemblies (4 of 7)

<b>Ref</b>	<b>Description</b>	<b>Part number</b>	<b>Qty</b>
6	Motor, developer DC (M1)	RL1-3053-000	1
7	Motor, drum DC (M2)	RL1-1800-000	1
8	Fan	RK2-3847-000	