

Internal assemblies (4 of 7)

Figure 2-6 Internal assemblies (4 of 7)

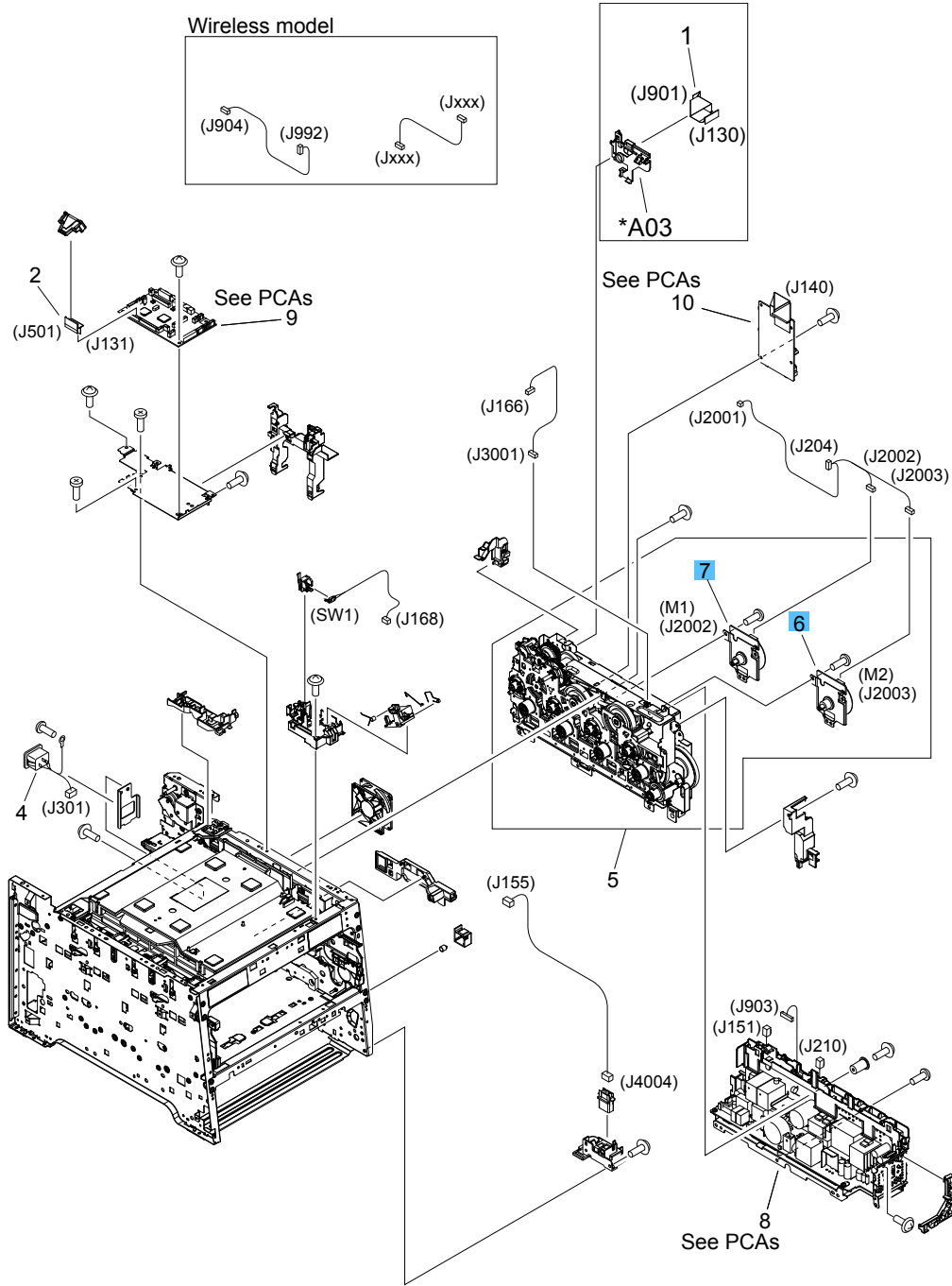


Table 2-14 Internal assemblies (4 of 7)

Ref	Description	Part number	Qty
6	Motor, developer DC (M1)	RL1-3053-000	1
7	Motor, drum DC (M2)	RL1-1800-000	1
8	Fan	RK2-3847-000	1