

Covers

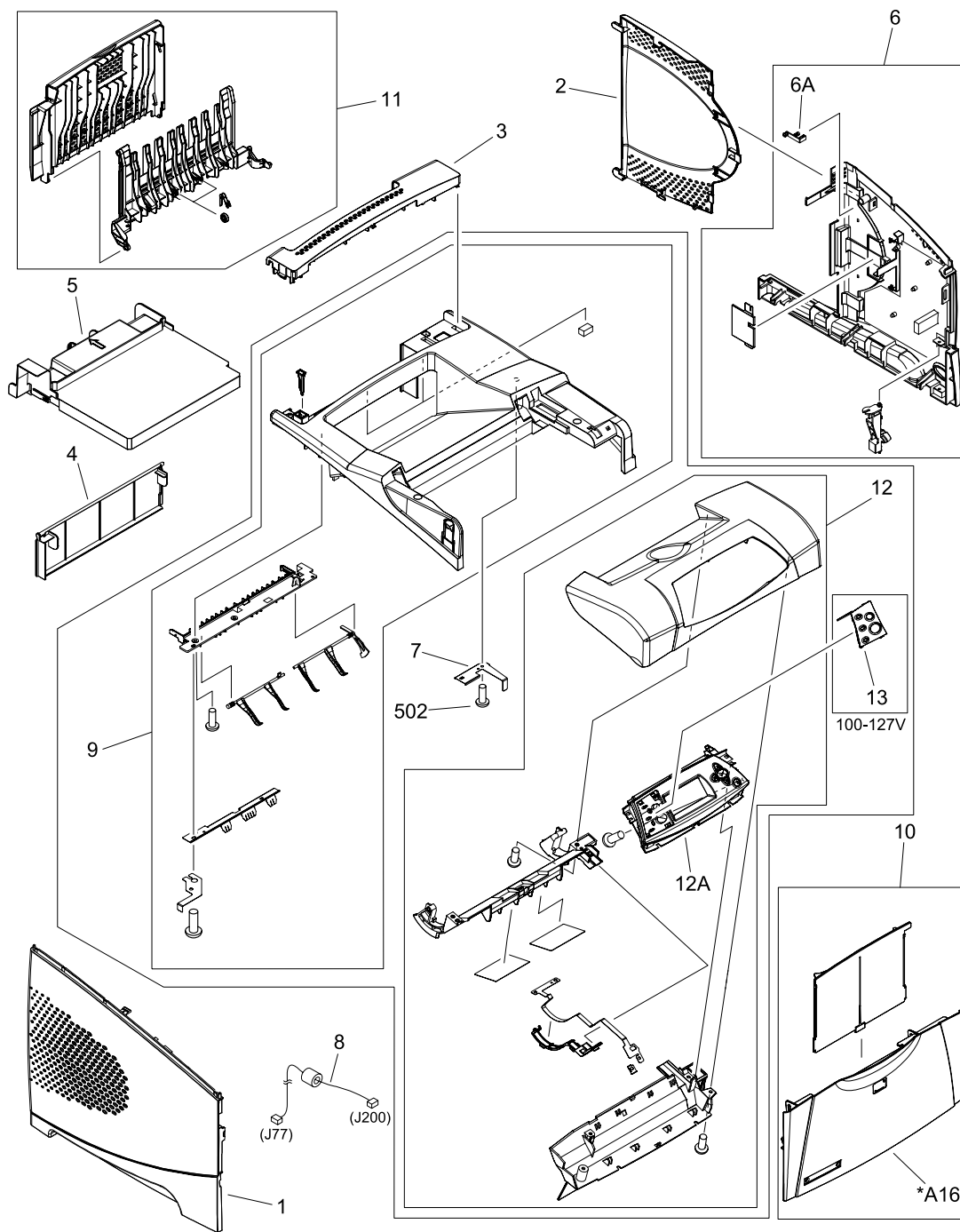


Figure 8-5 Covers

Table 8-7 Covers

Ref	Description	Part number	Qty
1	Cover, left (LJ 4200/4300)	RC1-0287-020CN	1
1	Cover, left (LJ 4250/4350)	RM1-1077-000CN	1
2	Cover, formatter	RC1-0288-000CN	1
3	Cover, paper-handling	RC1-0289-000CN	1
4	Cover, legal (LJ 4200/4300)	RC1-0290-000CN	1
4	Cover, legal (LJ 4250/4350)	RC1-3282-000CN	1
5	Cover, duplexing (LJ 4200/4300)	RC1-0291-000CN	1
5	Cover, duplexing (LJ 4250/4350)	RC1-3280-000CN	1
6	Cover assembly, right (LJ 4200/4300)	RM1-0046-000CN	1
6	Cover assembly, right (LJ 4250/4350)	RM1-1076-000CN	1
7	Spring, leaf grounding, top Cover (LJ 4250/4350 only)	RC1-0307-000CN	1
8	Cable, control panel (LJ 4200/4300)	RG1-4215-000CN	1
8	Cable, control panel (LJ 4250/4350)	RM1-1190-000CN	1
9	Cover assembly, top(LJ 4200/4300)	RM1-0049-000CN	1
9	Cover assembly, top (LJ 4250/4350)	RM1-1081-000CN	1
10	Cover assembly, front	RM1-0050-030CN	1
11	Cover, rear output bin	RM1-0027-020CN	1
12	Cover, cartridge door (LJ 4200)	RM1-0047-020CN	1
12	Cover, cartridge door (LJ 4300)	RM1-0114-020CN	1
12	Cover, cartridge door (LJ 4250/4350)	RM1-1080-000CN	1
12A	Control-panel assembly (LJ 4200/4300)	RG1-4276-020CN	1
12A	Control-panel assembly (LJ 4250/4350)	RM1-1195-000CN	1
13	Overlay, control panel, Turkish (LJ 4200/4300)	Q2431-40021	1
13	Overlay, control panel, Hebrew (LJ 4200/4300)	Q2431-40022	1
13	Overlay, control panel, Greek (LJ 4200/4300)	Q2431-40023	1
13	Overlay, control panel, EN/FR/DE/IT (LJ 4200/4300)	Q2431-60107	1
13	Overlay, control panel, EN/CS/HU/PL (LJ 4200/4300)	Q2431-60108	1
13	Overlay, control panel, NO/SW/FI (LJ 4200/4300)	Q2431-60109	1
13	Overlay, control panel, IT/ES/PT/SP (LJ 4200/4300)	Q2431-60110	1
13	Overlay, control panel, EN/RU (LJ 4200/4300)	Q2431-60111	1
13	Overlay, control panel, EN/AR (LJ 4200/4300)	Q2431-60112	1
13	Overlay, control panel, EN/FR/DE/NL (LJ 4200/4300)	Q2431-60113	1
13	Overlay, control panel, EN (LJ 4250/4350)	RC1-3356-000CN	1
13	Overlay, control panel, EN/FR/DE/IT (LJ 4250/4350)	Q5400-60102	1

Ref	Description	Part number	Qty
13	Overlay, control panel, CS/HU/PL/EL (LJ 4250/4350)	Q5400-60103	1
13	Overlay, control panel, NO/SV/FI (LJ 4250/4350)	Q5400-60104	1
13	Overlay, control panel, ES/PT/IT (LJ 4250/4350)	Q5400-60105	1
13	Overlay, control panel, EN/RU/TR (LJ 4250/4350)	Q5400-60106	1
13	Overlay, control panel, EN/AR (LJ 4250/4350)	Q5400-60107	1
13	Overlay, control panel, EN/DE/FR/NL (LJ 4250/4350)	Q5400-60108	1
13	Overlay, control panel, FR (LJ 4250/4350)	Q5400-60109	1
13	Overlay, control panel, AR (LJ 4250/4350)	Q5400-60111	1
(not shown)	Name plate kit, LJ 4200	Q2425-67901	1
(not shown)	Name plate kit, LJ 4300	Q2431-67908	1
(not shown)	Name plate kit, LJ 4200L	Q3993-40001	1
(not shown)	Name plate kit, LJ 4200Ln	Q3994-40004	1
(not shown)	Name plate kit, LJ 4250	Q5400-67911	1
(not shown)	Name plate kit, LJ 4350	Q5406-67912	1
502	Screw, tapping, pan head, m4x10	XB4-7401-007CN	n