

Internal assemblies (5 of 6)

Figure 2-12 Internal assemblies (5 of 6)

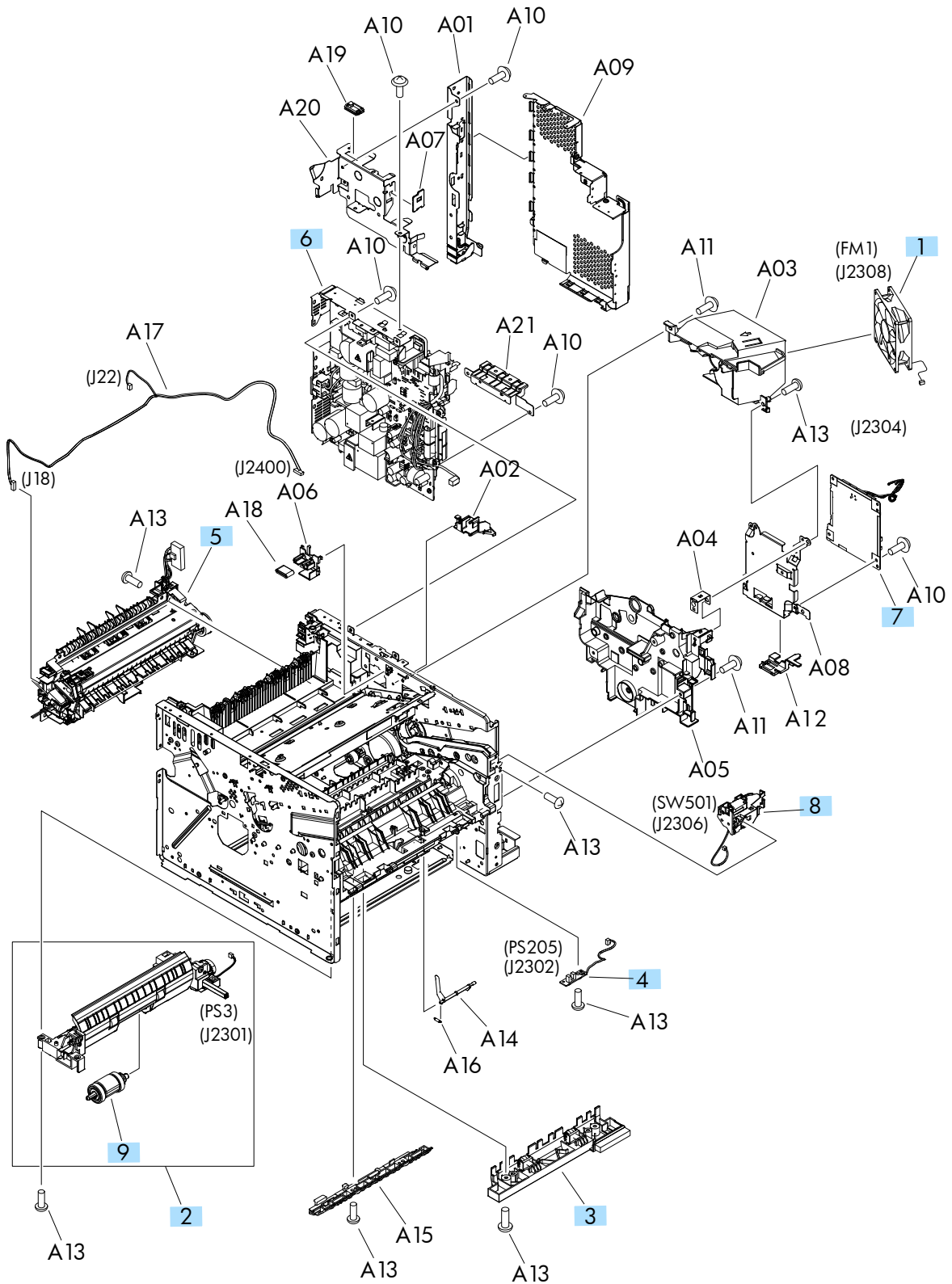


Table 2-16 Internal assemblies (5 of 6)

Ref	Description	Part number	Qty
1	Fan, main	RK2-2416-000CN	1
2	Tray 2, paper pickup assembly	RM1-8505-000CN	1
3	Idler roller assembly	RM1-8506-000CN	1
4	Multipurpose sensor PCA	RM1-8621-000CN	1
5	Fuser assembly (universal)	RM1-8508-000CN	1
6	Low voltage power supply assembly	RM1-8514-000CN	1
7	DC controller PCA	RM1-8615-000CN	1
8	Interlock switch assembly	RM1-8499-000CN	1
9	Tray pickup roller assembly	RM1-6323-000CN	1
Not shown	Stapler assembly (no cable) (see Stapler assembly on page 43)	5851-0786	1
Not shown	Stapler cable (see Stapler assembly on page 43)	CF116-60106	1
Not shown	Fax cradle, black plastic	5851-0672	1
Not shown	Hard drive, bracket	5851-3453	1
Not shown	Fax, cable	5851-3499	1
Not shown	Fax, cable, Israel	8120-8913	1
Not shown	Fax, cable, rest of the world	8120-0811	1
Not shown	Fax, cable, Switzerland	8120-0844	1
Not shown	Formatter, standard	CF104-69001	1
Not shown	Formatter, standard (China only)	CF116-67914	1