

Parts and diagrams: Covers (M631,M632, M633)

Covers (M631,M632, M633)

Figure 2-3 Covers (M631, M632, M633)

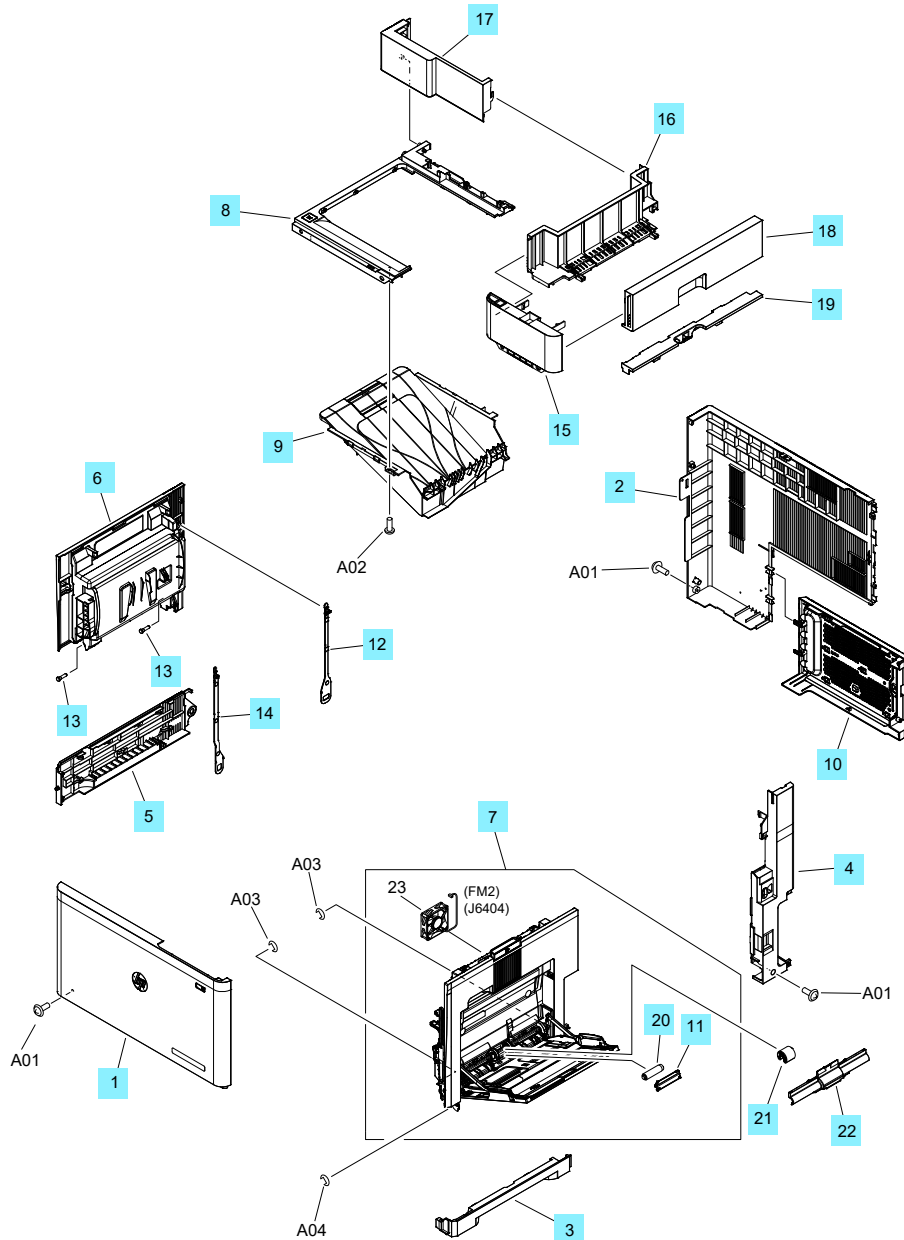


Table 2-6 Covers (M631, M632, M633)

Ref	Description	Part number	Qty
1	Front Cover Assy	RM2-1321-000CN	1
2	Cover, Rear	RL2-1682-000CN	1
3	Cover, Right Lower	RC4-8405-000CN	1
4	Cover, Inlet	RL2-1686-000CN	1
5	Cover, Left Lower	RC4-8406-000CN	1
6	Left Door Assy	RM2-0850-000CN	1
7	Right Door Assy	RM2-0849-000CN	1
8	Top Cover Assy	RM2-0865-000CN	1
9	Output Bin	RM2-0855-000CN	1
10	Formatter Cover Assy	RM2-1317-000CN	1
11	Guide, NIP	RC4-0548-000CN	1
12	Band, Left, Rear	RC4-8298-000CN	1
13	Shaft, Door	RC4-8301-000CN	2
14	Band, Left, Front	RC4-8302-000CN	1
15	Cover, Image Scanner, Front	RC4-8399-000CN	1
16	Cover, Image Scanner, Upper	RC4-8400-000CN	1
17	Cover, Image Scanner, Rear	RC4-8401-000CN	1
18	Cover, Image Scanner, Right	RC4-8411-000CN	1
19	Cover, Right Upper	RC4-8412-000CN	1
20	Tray 1 Roller Kit	J8J70-67903	1
21	Tray 1 Roller Kit	J8J70-67903	1
22	Cover, Multipurpose Roller	RL2-1274-000CN	1