

# Cassette (HCI)

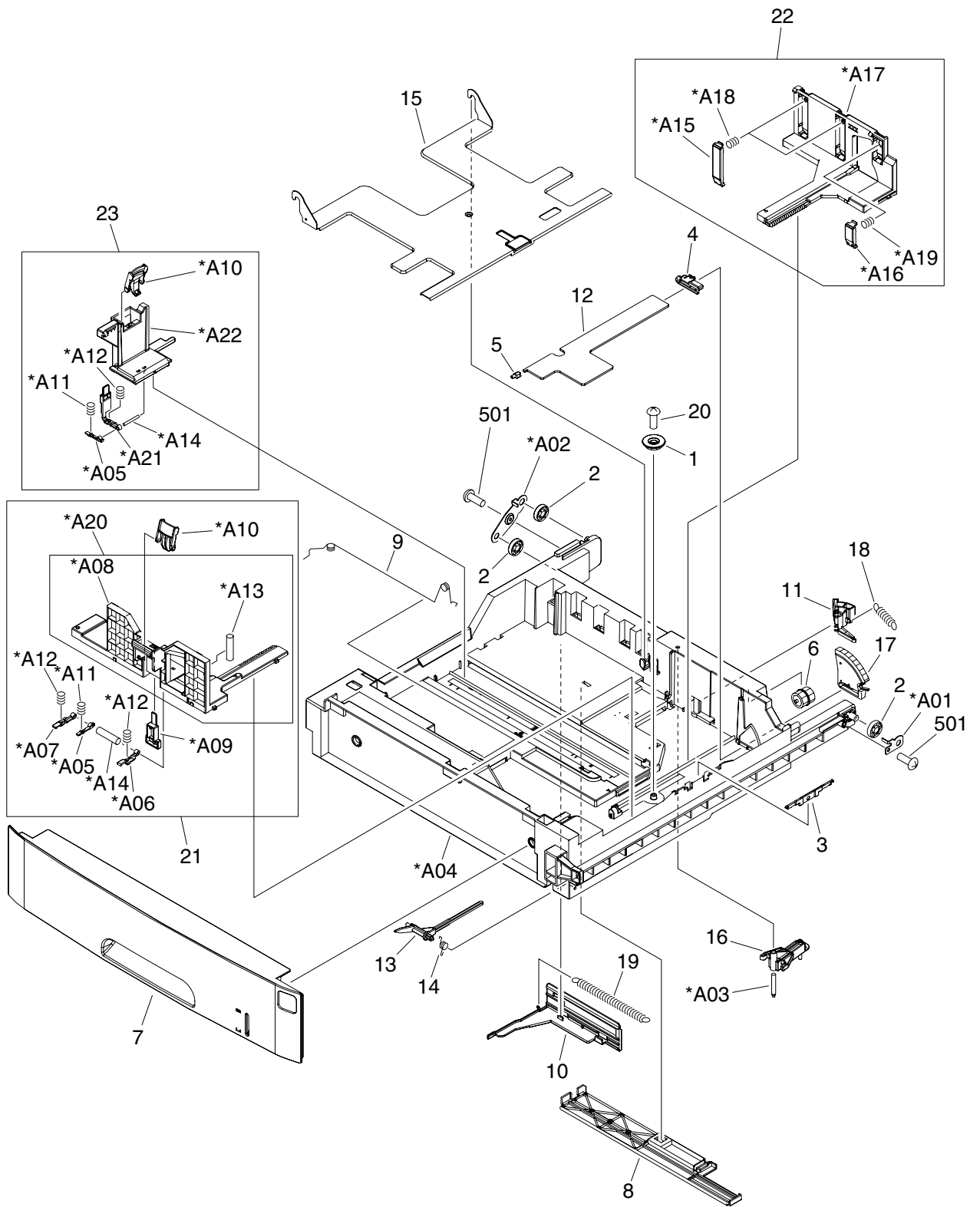


Figure 7-42 Cassette (HCI)

**Table 7-44** Cassette (HCI)

Ref	Description	Part number	Qty
All	Cassette (1X500 HCI)	RM1-3815-000CN	1
All	Cassette (3X500 HCI)	RM1-3815-000CN	3
1	Gear, 20T		1
2	Roller, cassette		3
3	Guide, nip		1
4	Support, lifter arm, 1		1
5	Support, lifter arm, 2		1
6	Gear, 14T		1
7	Cover, cassette, front		1
8	Cover, back end sensor		1
9	Spring, grounding		1
10	Block, length sensor		1
11	Lever, paper width sensor		1
12	Arm, lifter		1
13	Arm, remnant indication		1
14	Spring, torsion		1
15	Plate, lifter		1
16	Arm, pin support lifter		1
17	Gear, 80T		1
18	Spring, tension		1
19	Spring, tension		1
20	Screw, B, M4X8		1
21	Paper side end front assembly		1
22	Paper side end rear assembly		1
23	Back end limit assembly		1
501	Screw		2
A01	Plate, roller, right		1
A02	Plate, roller, left		1
A03	Shaft, arm support		1
A04	Body, cassette		1
A05	Arm, size click		2
A06	Stopper, side, right		1
A07	Stopper, side, left		1
A08	Plate, paper side end		1

Ref	Description	Part number	Qty
A09	Block, side release		1
A10	Knob, stopper release		2
A11	Spring, compression		2
A12	Spring, compression		3
A13	Pin, dowel		1
A14	Pin, dowel		2
A15	Guide, paper retaining, rear		2
A16	Guide, paper retaining, front		1
A17	Plate, paper side end		1
A18	Spring, compression		2
A19	Spring, compression		1
A20	Plate, paper side end		1
A21	Lifter, back end		1
A22	Plate, back end limit		1



**NOTE** Not all components listed in the parts tables can be ordered. If a component listed has an associated part number, then it is a field replaceable unit (FRU) and can be ordered. If the component does not have an associated part number, you must order the FRU that includes the desired component.