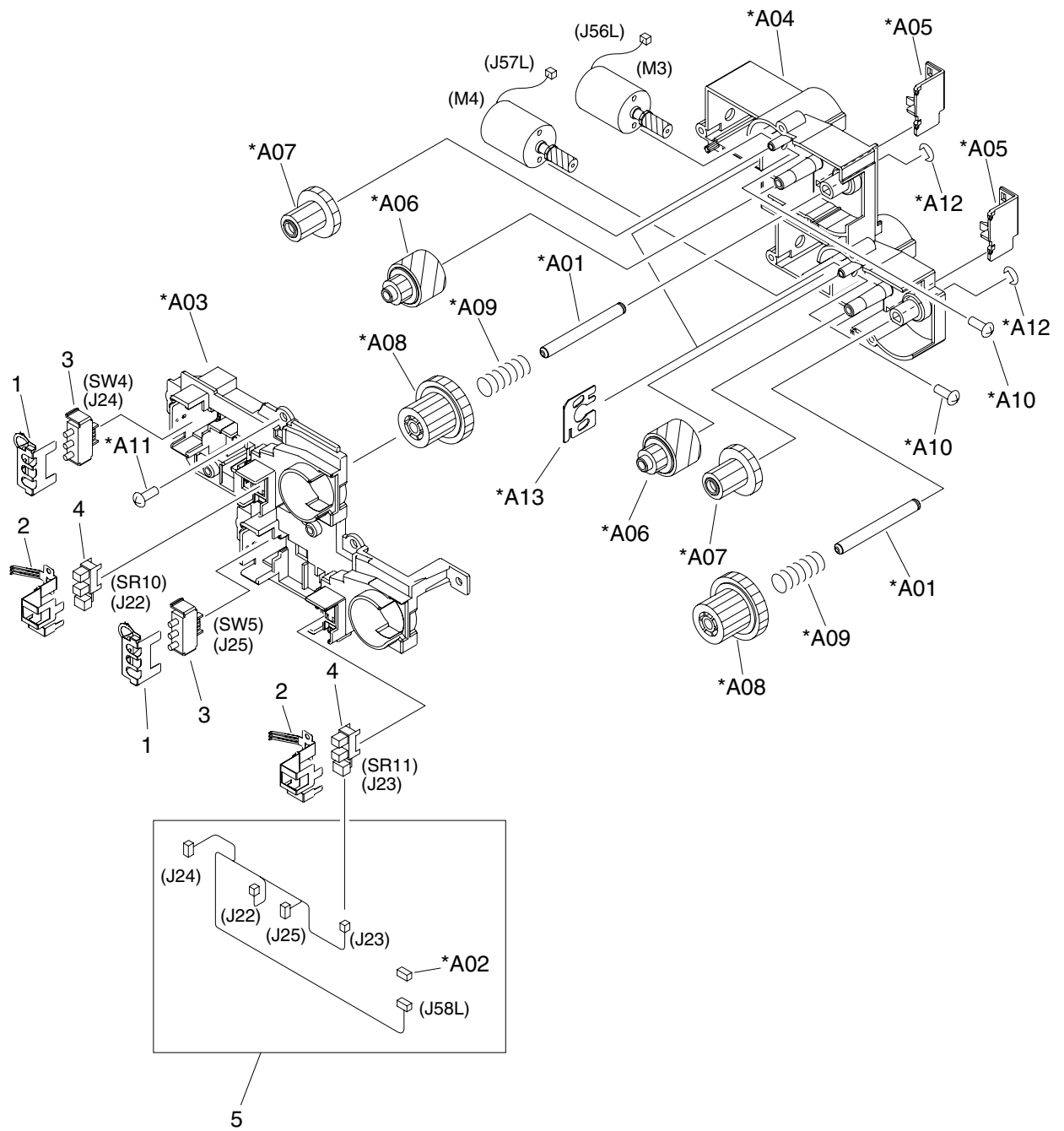


# Lifter drive assembly (print engine)



**Figure 7-27** Lifter drive assembly (print engine)

**Table 7-29** Lifter drive assembly (print engine)

Ref	Description	Part number	Qty
All	Lifter drive assembly	RM1-2969-000CN	1
1	Spring, grounding		2
2	Plate, photosensor grounding		2
3	Switch, push		2
4	Photo interrupter, TLP1243	WG8-5696-000CN	2
5	Cable, cassette size		1
A01	Shaft, cassette input gear		2
A02	Connector, snap tight		1
A03	Box, gear, front		1
A04	Box, gear, rear		1
A05	Cover, gear box protective		2
A06	Gear, 39T/21T		2
A07	Gear, 43T/17T		2
A08	Gear, 43T/16T		2
A09	Spring, compression		2
A10	Screw, w/washer, M3X6		4
A11	Screw, tapping, truss head, M4X10		5
A12	Ring, E		2
A13	Plate, lifter		2



**NOTE** Not all components listed in the parts tables can be ordered. If a component listed has an associated part number, then it is a field replaceable unit (FRU) and can be ordered. If the component does not have an associated part number, you must order the FRU that includes the desired component.