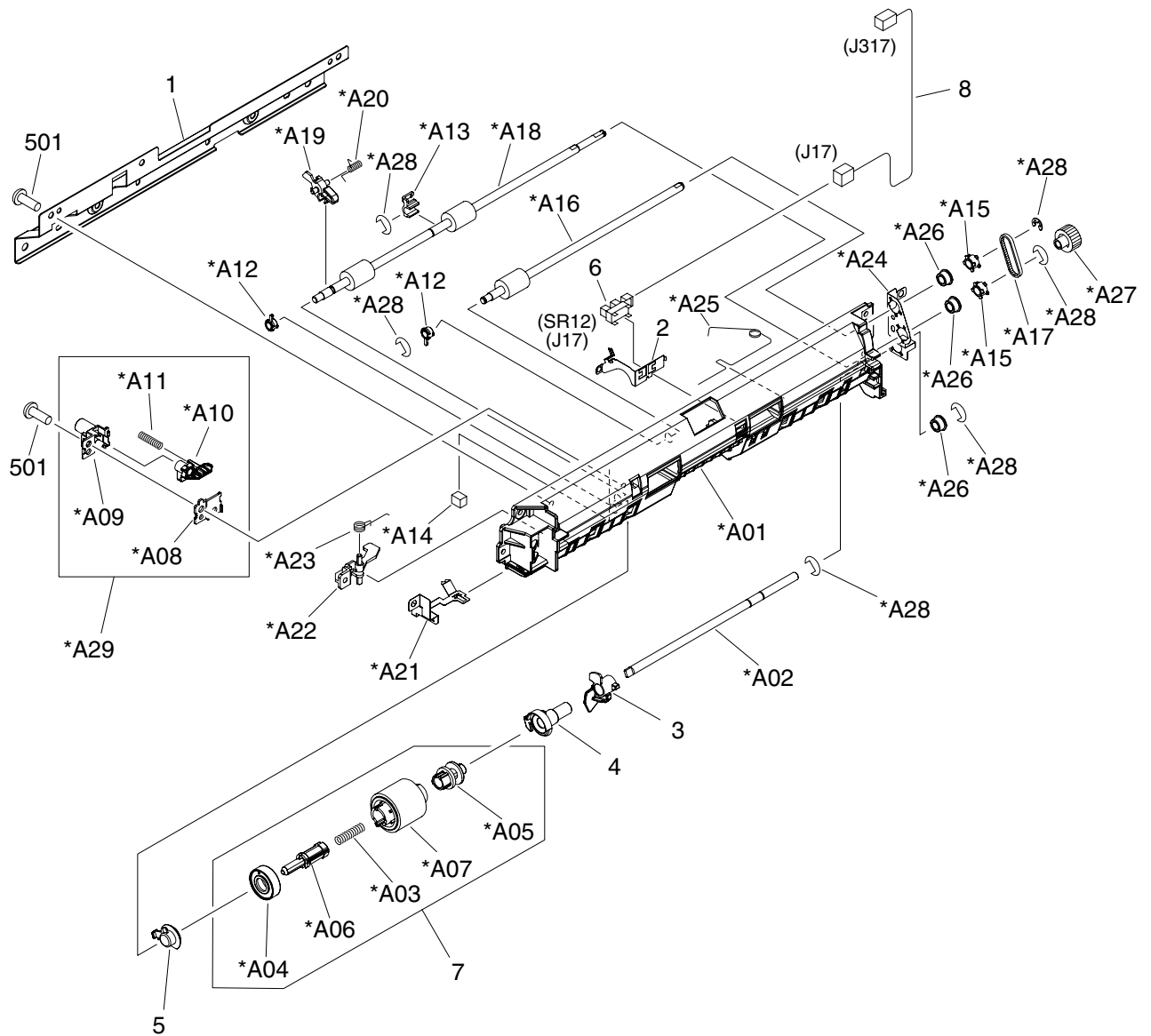


# Lower cassette pickup assembly (print engine)



**Figure 7-33** Lower cassette pickup assembly (print engine)

**Table 7-35** Lower cassette pickup assembly (print engine)

Ref	Description	Part number	Qty
All	Lower cassette pickup assembly (engine)	RM1-2977-000CN	1
1	Support, frame, lower		1
2	Plate, sensor grounding		1
3	Lever, paper sensor		1
4	Bushing		1
5	Bushing		1
6	Photo interrupter, TLP1243	WG8-5696-000CN	1
7	Paper pickup roller assembly	RM1-2998-000CN	1
8	Cable, cassette sensor, lower		1
501	Screw, tapping, truss head, M4X10		6
A01	Frame, paper pickup, lower		1
A02	Shaft, paper pickup drive		1
A03	Spring, compression		1
A04	Cap, paper pickup, left		1
A05	Core, paper pickup roller		1
A06	Shaft, cassette slide		1
A07	Roller, cassette paper pickup		1
A08	Case, roller stopper		1
A09	Case, roller stopper		1
A10	Lever, roller stopper		1
A11	Spring, compression		1
A12	Bushing		2
A13	Bushing		1
A14	Pad, flapper		1
A15	Pulley		2
A16	Roller, paper feed, A5		1
A17	Belt, paper feed		1
A18	Roller, multipurpose, lower		1
A19	Flag, path sensor, lower		1
A20	Spring, torsion		1
A21	Plate, grounding lower		1
A22	Lever, cover sensing, right		1
A23	Spring, torsion		1
A24	Plate, roller grounding, lower		1

Ref	Description	Part number	Qty
A25	Spring, grounding		1
A26	Bushing		3
A27	Gear, 16T		1
A28	Ring, E		6
A29	Roller stopper assembly		1



**NOTE** Not all components listed in the parts tables can be ordered. If a component listed has an associated part number, then it is a field replaceable unit (FRU) and can be ordered. If the component does not have an associated part number, you must order the FRU that includes the desired component.