

Internal assemblies (1 of 6)

Figure 4-4 Internal assemblies (1 of 6)

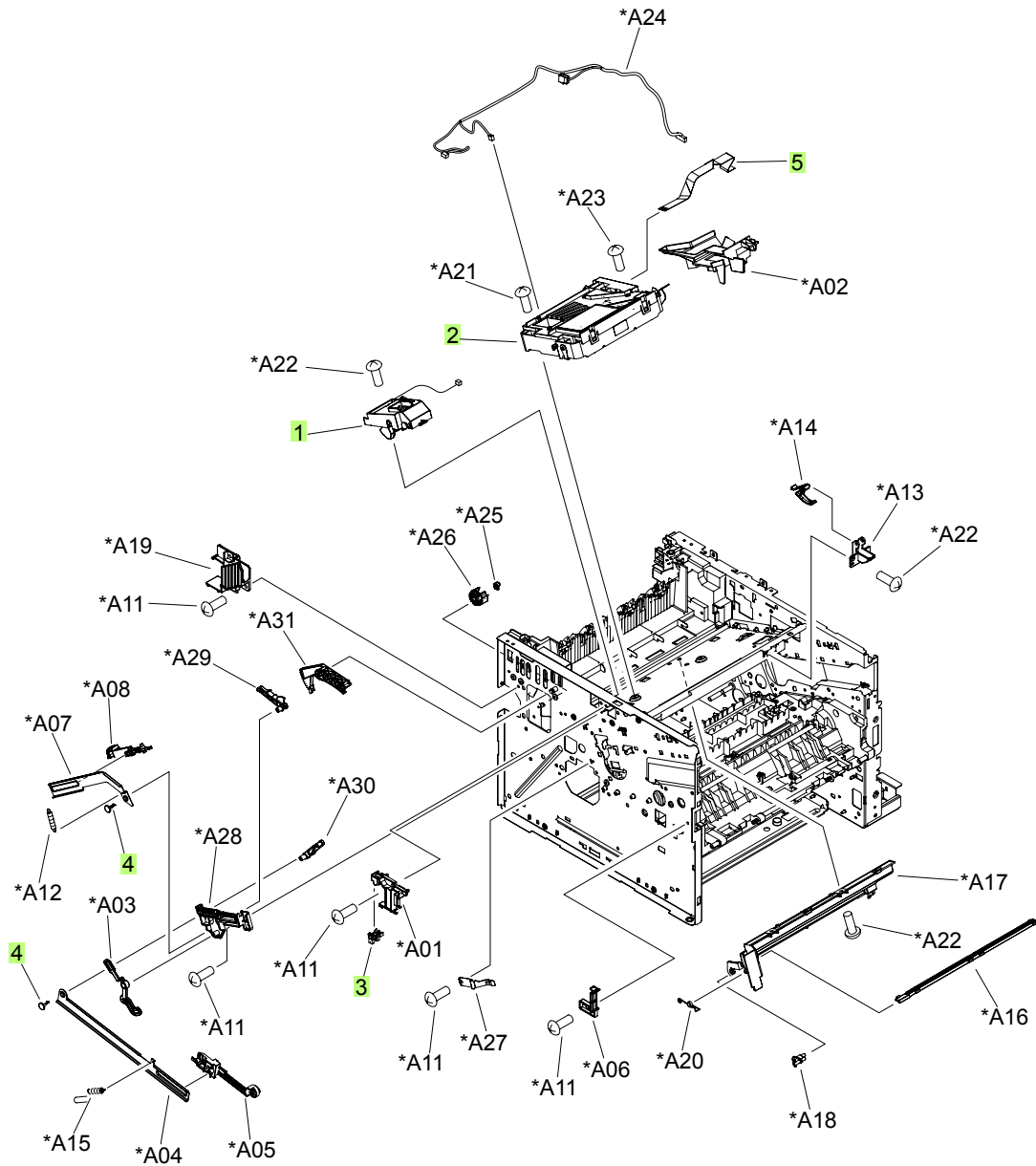


Table 4-9 Internal assemblies (1 of 6)

Ref	Description	Part number	Qty
1	Tag holder assembly	RM1-6284-000CN	1
2	Laser/scanner	RM1-6322-000CN	1
3	Photo interrupter, TLP1243	WG8-5696-000CN	1
4	Stopper, bushing arm	RC2-7933-000CN	2
5	Cable, flat	RK2-3103-000CN	1