

Internal assemblies (5 of 6)

Figure 4-8 Internal assemblies (5 of 6)

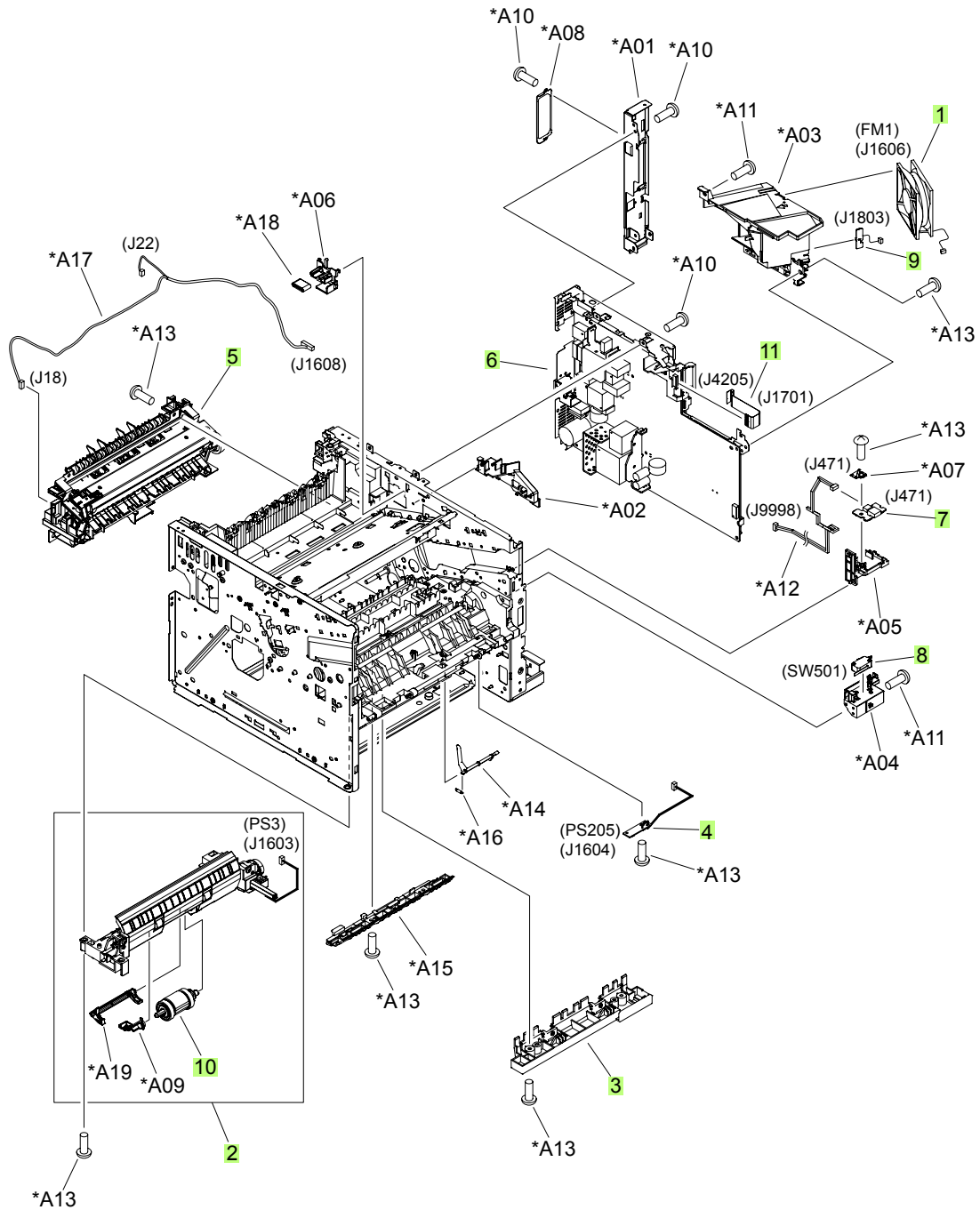


Table 4-13 Internal assemblies (5 of 6)

Ref	Description	Part number	Qty
1	Fan, main	RK2-1497-000CN	1
2	Cassette, paper pickup assembly; duplex models	RM1-6268-000CN	1
2	Cassette, paper pickup assembly; simplex models	RM1-6299-000CN	1
3	Idler roller assembly	RM1-6271-000CN	1
4	Multipurpose sensor PCA	RM1-6510-000CN	1
5	Fuser assembly 110V	RM1-6274-000CN	1
5	Fuser assembly 220V	RM1-6319-000CN	1
6	Engine controller PCA 110V	RM1-6281-000CN	1
6	Engine controller PCA 220V	RM1-6318-000CN	1
7	Front USB PCA	RM1-6514-000CN	1
8	Microswitch	WC4-5171-000CN	1
9	Environmental sensor assembly	RM1-6515-000CN	2
10	Cassette pickup roller	RM1-6313-000CN	1
11	Cable, flat	RK2-2788-000CN	1