

Figure 8-11 Multipurpose pickup assembly

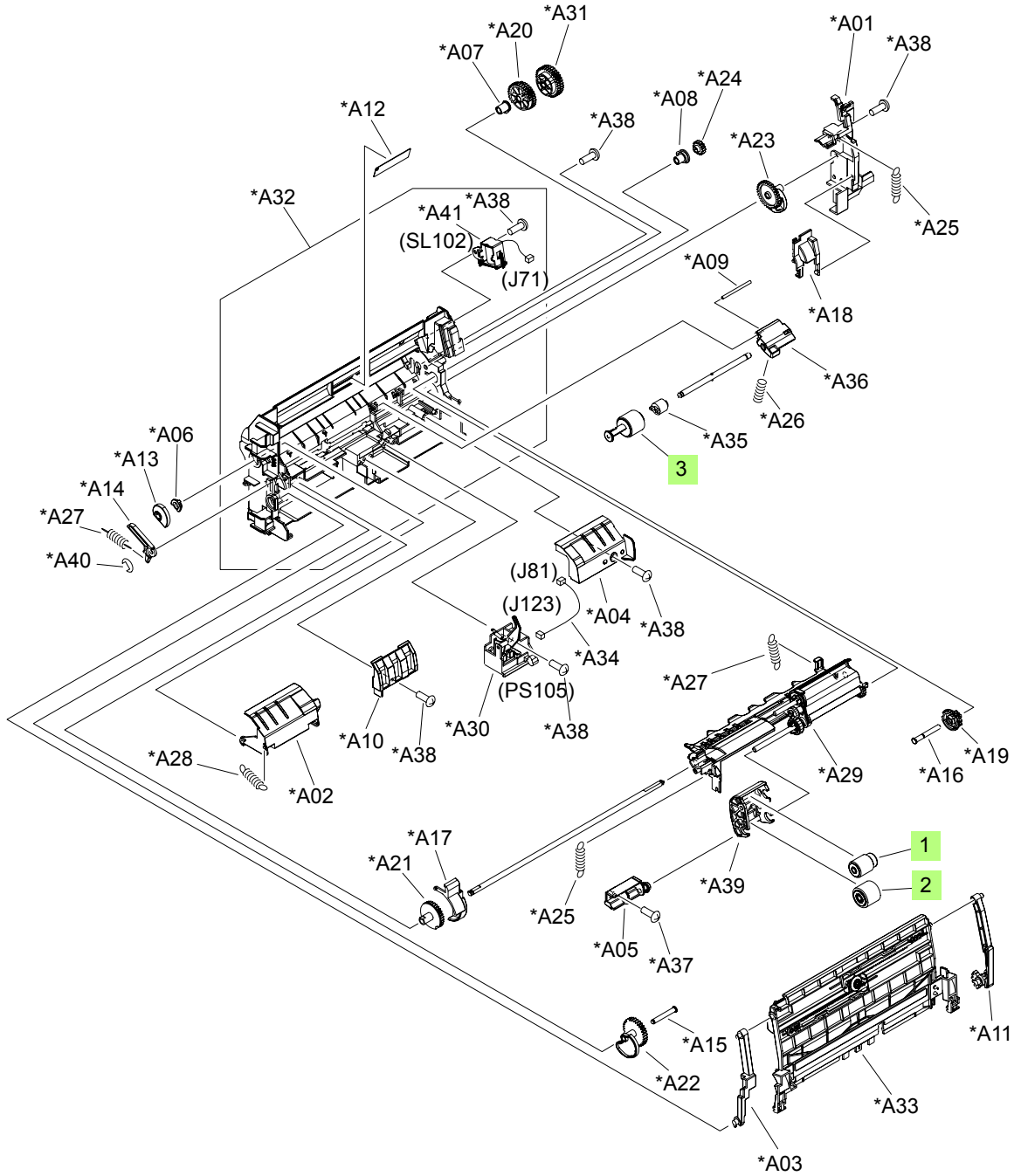


Table 8-10 Multipurpose pickup assembly

Ref	Description	Part number	Qty
	Multipurpose pickup assembly	RM1-4563-000CN	1
	Multipurpose tray kit (contains 1 pickup roller, 1 feed roller, 1 separation roller)	CB506-67905	1
1	Roller, pickup	RL1-1641-000CN	1
2	Roller, feed	RL1-1663-000CN	1
3	Roller, separation	RL1-1654-000CN	1
A01	Frame, multi, right		1
A02	Guide, nip, left		1
A03	Guide, nip, center		1
A04	Guide, nip, right		1
A05	Bushing		1
A6	Bushing		1
A07	Bushing		1
A08	Bushing		1
A09	Shaft, size sensing		1
A10	Hinge, multi, left		1
A11	Hinge, multi, right		1
A12	label, jam clear envelope		1
A13	Cam		1
A14	Lever		1
A15	Shaft, multipurpose cam, left		1
A16	Shaft, multipurpose cam, right		1
A17	Cover, multipurpose spring, left		1
A18	Cover, multipurpose spring, right		1
A19	Gear, 15T/21T		1
A20	Gear, 30T/34T		1
A21	Gear, 30T		1
A22	Cam/gear, 30T		1
A23	Cam/gear, 30T		1
A24	Gear, 14T		1
A25	Spring, tension		2
A26	Spring, compression		1
A27	Spring, tension		2
A28	Spring, tension		1
A29	Multipurpose guide assembly		1

Table 8-10 Multipurpose pickup assembly (continued)

Ref	Description	Part number	Qty
A30	Presence sensor holder assembly		1
A31	Multipurpose pickup gear assembly		1
A32	Multipurpose frame assembly		1
A33	Multipurpose tray assembly		1
A34	Cable, multipurpose sensor		1
A35	Limiters, multipurpose torque		1
A36	Holder, separation		1
A37	Screw, D, M3x8		1
A38	Screw, tap, pan head, M4x10		7
A39	Cover, roller		1
A40	Ring, E		1
A41	Multipurpose solenoid assembly		1

¹ Only orderable parts have part numbers.