

Figure 8-12 Paper delivery assembly

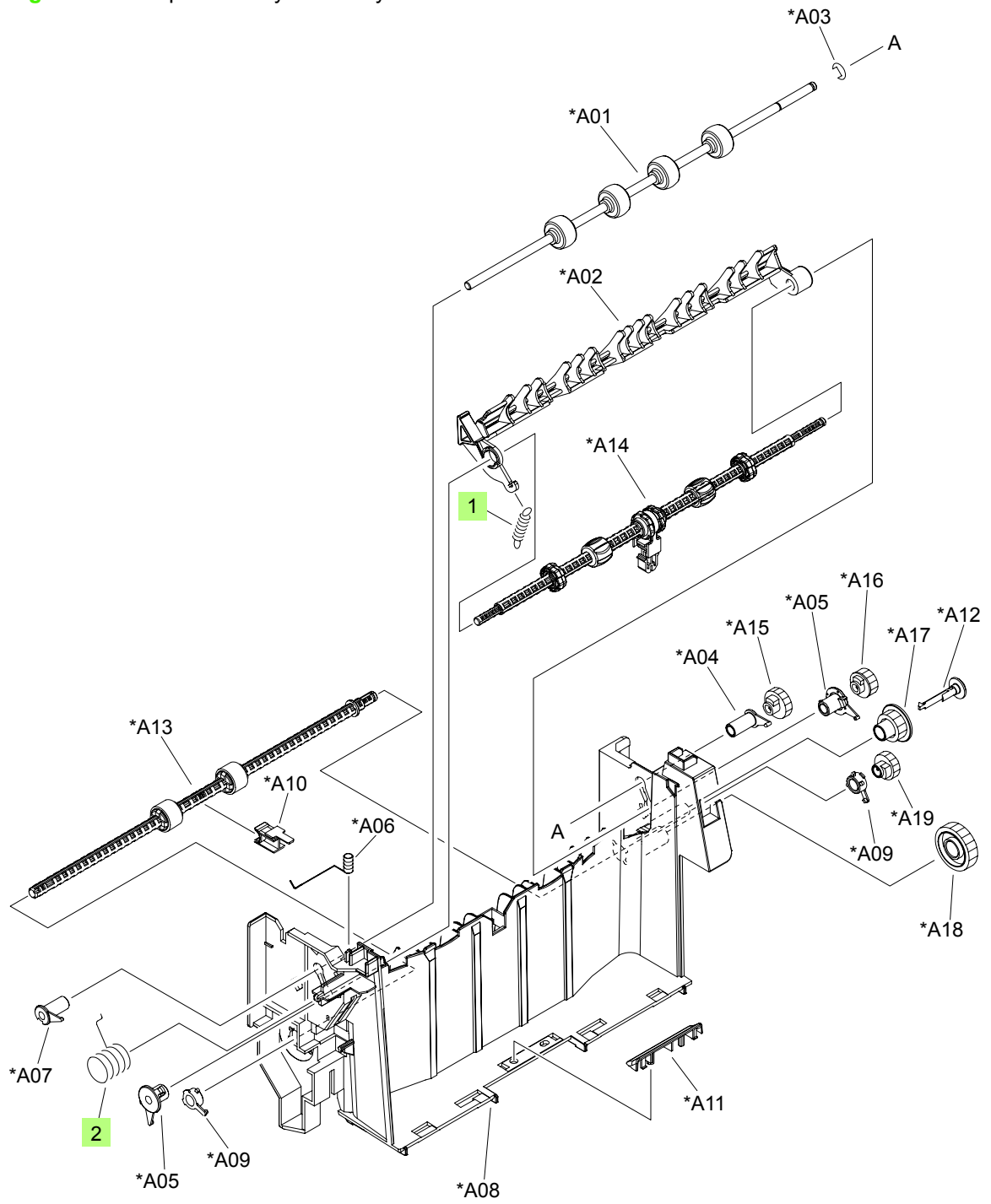


Table 8-11 Paper delivery assembly

| Ref | Description | Part number | Qty |
|-----|-----------------------------------|----------------|-----|
| | Paper delivery assembly | RM1-4529-000CN | 1 |
| 1 | Spring, tension | RC1-0133-000CN | 1 |
| 2 | Spring, grounding | RU6-2105-000CN | 1 |
| A01 | Roller, face-down, upper | | 1 |
| A02 | Deflector, delivery | | 1 |
| A03 | Ring, E | | 1 |
| A04 | Bushing, paper delivery, upper | | 1 |
| A05 | Bushing | | 2 |
| A6 | Spring, grounding | | 1 |
| A07 | Bushing, paper delivery, upper | | 1 |
| A08 | Frame, face-down | | 1 |
| A09 | Bushing | | 2 |
| A10 | Bushing | | 1 |
| A11 | Guide, paper delivery | | 1 |
| A12 | Flange, positioning roller, right | | 1 |
| A13 | Roller, delivery intermediate | | 1 |
| A14 | Roller, face-down, lower | | 1 |
| A15 | Gear, 21T | | 1 |
| A16 | Gear, 17T | | 1 |
| A17 | Gear, 20T | | 1 |
| A18 | Gear, 33T | | 1 |
| A19 | Gear, 18T | | 1 |

¹ Only orderable parts have part numbers.