

Internal assemblies (2 of 3)

Figure 2-4 Internal assemblies (2 of 3)

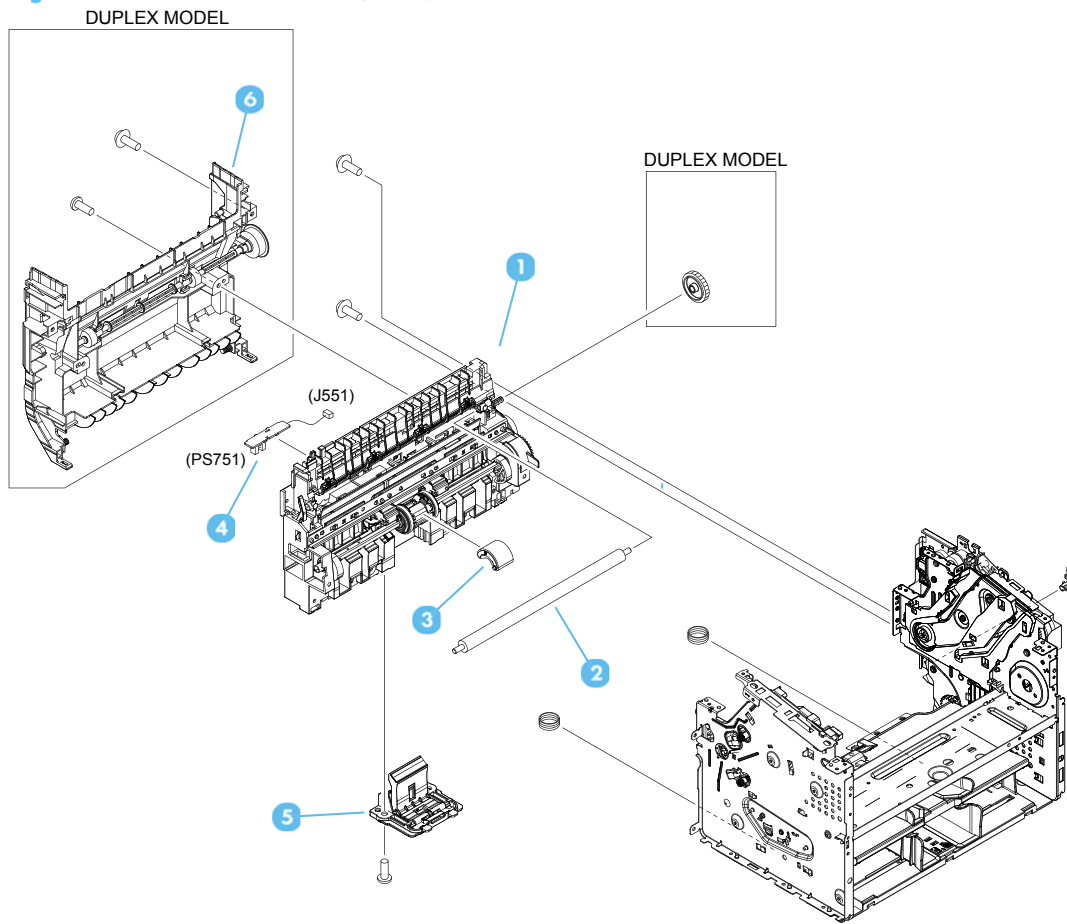


Table 2-9 Internal assemblies (2 of 3)

Ref	Description	Part number	Qty
1	Paper pick-up assembly (duplex product)	RM2-6524-000	1
1	Paper pick-up assembly (simplex product)	RM2-6525-000	1
2	Roller, transfer	RM1-4023-000	1
3	Roller, pickup	RL1-3642-000	1
4	Paper pick-up sensor PCB assembly	RM2-7609-000	1
5	Separation pad assembly	RM1-4227-000	1
6	Duplexing frame assembly	RM1-9655-000	1