

hp LaserJet 9000 series

hp LaserJet 9000/n/dn/mfp/Lmfp

Unparalleled performance with the flexibility you've always wanted. The HP LaserJet 9000 series is the ultimate versatile, high speed, monochrome network device. It combines speed, ease-of-use, and flexibility in one product to provide exceptional power and versatility to handle diverse document production needs.



hp LaserJet 9000 printer



hp LaserJet 9000n printer



hp LaserJet 9000dn printer with optional 2000-sheet feeder



hp LaserJet 9000mfp/9000Lmfp printer with optional stapler/stacker

The HP LaserJet 9000 series is one of a new generation of internet-enabled devices, offering general office users in demanding workgroup environments outstanding high volume performance from a proven reliable platform.

- Save valuable time and improve workgroup productivity with 50* pages per minute throughput at highest resolution, ensuring excellent print and copy quality for great looking documents and a fast first page out in less than 8 seconds.
- Experience a new dimension in remote hardcopy management and greatly improve overall productivity, with easy to set up, configurable alerts via e-mail, printer/mfp settings which can be changed remotely, and consumables and support ordered and managed online.
- With its low total cost-of-ownership the HP LaserJet 9000 series leads in value for money, delivering unmatched performance with more functionality, flexibility and scalability than ever before.

Setting a new performance standard for the general office.

- Enjoy rapid job processing with a fast 300 MHz processor and standard memory of 64 MB RAM (128 MB RAM and 10 GB hard disk standard with the mfp), so even complex documents print quickly.
- With a duty cycle of up to 300,000 pages per month, the device is designed to exceed the needs of most demanding business environments.

Utilise the full potential of the internet.

- Remote management with the HP LaserJet 9000 series lets you have full control at the touch of a button. You can easily change any individual device's configuration setting, and monitor the status, so no matter where it is located, you can manage it remotely across the network, via the intranet or internet.
- Use, maintenance and support are easier than ever, with intuitive and very simple installation and configuration, printer driver compatibility, and an improved control panel.
- You have better support with immediate access via the web to extensive self-help information, so you can identify any problems and solve them easily.
- You can set up e-mail alerts configured to specified recipients for more efficient control of supplies and service, and new features and functions can be added in the future.
- You can benefit from new printing e-services using the CHaiVM (embedded virtual machine). This technology also allows you to have tailored solutions developed to make your appliance perform specific business tasks.

A wealth of versatile solutions for workgroup printing in the general office

- Achieve professional results for complex documents which require finishing, as the HP LaserJet 9000 series supports a wide range of paper handling devices, including a standard 2000-sheet high capacity input tray, an optional 3000-sheet output offset stacker, 3000-sheet stapler/stacker and a multifunction finisher with booklet making functionality.

* 9000Lmfp up to 40 pages per minute.

hp LaserJet 9000mfp/9000Lmfp

high-volume multifunction printer



standard features

• print

Create professional communication with fast, high quality, monochrome laser printing up to 50* ppm (A4) for results you can rely on every time.

• copy

Convenient and fast monochrome copying with a speed of up to 50* (A4) pages per minute with straight paper path with a dual-head single pass scanner. You can also reduce or enlarge your copy with page size presets and enhance the image quality.

• send to e-mail (out-of-the-box)

Documents can be scanned in colour and black and white, converted to PDF, JPEG and TIFF format and sent as e-mail attachments to individual recipients, or simultaneously to multiple addresses ensuring privacy and saving time and money.

functionality:

- send-to e-mail
- downloading of e-mail address book to the device supported
- auto-configuration: SMTP server (IP address); LDAP address book (IP address)
- keyboard for e-mail address and subject entry
- colour and monochrome scanning
- TIFF, PDF and JPEG file types with smart compression
- sending while printing

* 9000Lmfp up to 40 pages per minute.

optional features

• hp analog fax accessory - q1314a

Hardware accessory that enables the user to receive and send analog fax, as it is possible with a stand alone fax machine.

• hp digital sending software 3.0 - secure access – t1929aa

Software accessory that provides user authentication for environments where send to e-mail access control is needed.

• hp digital sending software 3.0 - communications – t1930aa

Software accessory that provides all of above, plus: enables users to send black and white or colour paper documents directly to LAN fax, internet fax and Win 2K/XP fax services at the touch of a button.

• hp digital sending software 3.0 - workflow – t1931aa**

Software accessory that provides custom function keys to collect job information during scan job, send to folder, send to FTP location, OCR (ABBYY FineReader 6.0 engine), send to PCL (printer), user authentication.

• hp autostore - nob8535a

Add to the functionality of the HP AutoStore document management software: it enables intelligent document capture, processing and routing into most popular applications (Microsoft SharePoint Portal Server, Microsoft Exchange, Lotus Notes/Domino, Oracle and many others).

** Available Summer 2003

• **management control**

The HP LaserJet 9000 series incorporates advanced hardware and software features to make device management scalable – from a critical single device to your complete network of connected peripherals.

- hp embedded web server provides direct access to the hp LaserJet 9000 series on the network and allows full control to remotely configure device settings and e-mail alerts, monitor status, and diagnose device problems
- hp web jetadmin enables remote installation, configuration, diagnostics, and proactive management for all your network peripherals from a common web browser
- device problems can be resolved quickly with direct access to targeted self-help information via the web

• **hp jetcaps solutions**

Together with our worldwide network of HP JetCAPs partners we can offer you a full range of carefully selected products and business printing solutions that complement HP LaserJet printers. Products can be mixed, matched and customised to provide you with exactly the printing solution you require. Consulting, implementation services and support are also available.

The range of extended solutions available enables you to achieve huge savings, and accomplish printing tasks more easily.

- e-forms and stationery
- corporate design
- barcodes and cheque printing (OCR and MICR)
- printing from SAP R/3 and ERP packages
- secure printing using Smart cards
- host and volume printing
- cost-controlled printing and copying
- print job accounting
- special industry solutions

Additional information can be obtained from www.jetcaps.com

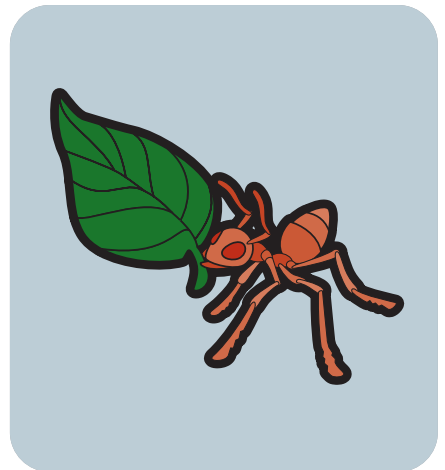
• **hp printadvantage**

By bringing complete transparency to your printing costs, and outsourcing maintenance and support, HP Printadvantage radically improves your business efficiency. It frees up valuable resources for more effective tasks, and means your team can focus on core activities which support your business growth.

HP Printadvantage is a complete package. You procure and manage your printing requirements in one easy transaction. We've streamlined the procurement process, and created a service plan to provide you with the latest print technology, print cartridge, maintenance and first class support. All in one contract, all covered by one monthly invoice. You just turn it on, then turn it up or down as your business requires. Easier for you, better for your business.

Additional information can be obtained from <http://printadvantage.hp.com>

unparalleled performance with the flexibility you've always wanted



paper handling options* – hp LaserJet 9000 series



3000-sheet stacker
c8084a



3000-sheet stapler/stacker
c8085a



multifunction finisher
c8088a



multipurpose tray
c8568a



2000-sheet input tray
c8531a

* HP LaserJet 9000mfp/9000Lmfp must be ordered with an optional output device

technical specifications

print speed	HP LaserJet 9000/n/dn/mfp printer: Up to 50 ppm (A4), up to 28 ppm (A3); HP LaserJet 9000Lmfp printer: Up to 40 ppm (A4), up to 22 ppm (A3).	
processor	300 MHz	
first page out	Less than 8 secs	
memory	Standard: HP LaserJet 9000/n/dn printer: 64 MB, HP LaserJet 9000mfp/9000Lmfp: 128 MB, expandable to 384 MB RAM on 100-pin DIMMS, using Memory Enhancement technology (MET), memory slots: 2 100-pin DIMM sockets.	
print	print resolution: print quality: printer languages: typefaces/fonts: duty cycle:	Resolution Enhancement technology (RET), HP Fastres 1200, HP Ultraprecise toner 600 x 600 dpi HP PCL 5e, PCL 6, HP Postscript level 3 emulation, HP PJI (Printer Job Language), PML (Printer Management Language) 80 scalable TrueType fonts built-in, with 65 additional scaleable typefaces for Windows additional 136 PostScript fonts available as DIMM accessory up to 300,000 pages per month
copy (mfp only)	multiple copies: reduce/enlarge: scan resolution: scan speed:	999 copies 25 to 400% optical: 600 x 600 dpi RGB data (monochrome and colour) colour: up to 24 ppm, black and white text: up to 50 ppm
send to e-mail (mfp only)	advanced features:	JPEG scan converted to desired send format, text/mixed/graphic, TIFF/M-TIFF/PDF/JPEG, colour/black and white.
analog fax (mfp only) (optional)	modem: fax memory: resolution:	1.4 Kbps, CCIT/ITU-T Group 3, EIA/TIA Class 1; compression MH, MR and MMR; V.17, V.33, V.29, V.27ter. utilises 10 GB hard disk standard 200 x 100 dpi; fine 200 x 200 dpi; superfine 300 x 300 dpi.
paper handling	HP LaserJet 9000/n/dn printer: standard: 2 x 500-sheet input trays, optional: 2000-sheet feeder, 100-sheet multipurpose tray, duplex printing accessory, 3000-sheet stacker, 3000-sheet stapler/stacker; HP LaserJet 9000mfp/9000Lmfp: standard: 2 x 500-sheet input trays, 100-sheet multipurpose input tray, 2000-sheet feeder, duplex printing accessory, optional: 3000-sheet stapler/stacker, 3000-sheet stacker, multifunction finisher.	
media types & weights	Multipurpose tray: 64 to 216 g/m ² , other standard input trays: 64 to 199 g/m ² , standard: A4, B4, B5, A3, A5 (excluding 2000-sheet input tray), custom: HP LaserJet 9000/n/dn printer: 148 x 210 to 297 x 432 mm, 99 x 191 mm (100-sheet multipurpose input tray), HP LaserJet 9000mfp/9000Lmfp multipurpose tray: 99 x 191 mm minimum to 279 x 432 mm or 297 x 432 mm maximum. Other input trays: 297 x 450 mm maximum. Paper (plain, pre-printed, letterhead, pre-punched, bond, colour, recycled, rough), transparencies, labels, card stock, user-defined (up to five types).	
duplex printing	Two-sided printing capability: HP LaserJet 9000/n printer: optional. HP LaserJet 9000dn/mfp/Lmfp: standard. Supported media size: letter, legal A4, B4, A3, B5, executive (279 x 432 mm maximum).	
interface and connectivity	Standard: IEEE 1284-compliant parallel port. HP LaserJet 9000: 3 EIO slots; HP LaserJet 9000n/dn: 2 EIO slots and HP Jetdirect 615n; HP LaserJet 9000mfp/9000Lmfp: HP Jetdirect 615n. Optional: internal print servers, external print servers, and wireless connectivity, fast infrared connect. Drivers included: HP PCL 5e, HP PCL 6, HP Postscript level 3 emulation.	
operating system compatibility	Supported: Microsoft® Windows® (9X, Me, NT 4.0, 2000, XP), IBM OS/2 version 3.0 or greater (available from the web), Apple Mac OS 7.5 or greater, Linux (available from the web), AutoCAD™.	
network operating systems compatibility	Supported: Novell® NetWare 3.x, 4.x, 5.x, Microsoft® Windows® (9x, Me, NT 4.0, 2000, XP), Apple Mac OS (EtherTalk), Linux (available from the web), UNIX® (available from the web).	
standard software	Remote hardcopy management, HP resource manager, HP common installer, HP Internet installer, HP disk image utility, HP common drivers, HP resource manager for Macintosh, HP common installer for Macintosh, HP internet installer for Macintosh, HP disk image utility for Macintosh, HP common drivers Macintosh client, ppsds/pdes for Macintosh, HP LaserJet utility for Macintosh, fonts for Macintosh, help files (English only) for Macintosh, AutoCAD™.	
control panel	HP LaserJet 9000/n/dn printer: three light-emitting diode (LED) indicator lights, eight navigation keys, a 10-key numeric pad, and a 4-line display (20 characters per line); HP LaserJet 9000mfp/9000Lmfp: touch-screen graphical control panel.	
power requirements	220 to 240 volts (± 10%) / 50 Hz (± 2 Hz), 100 to 127 volts (± 10%) / 50 to 60 Hz (± 2 Hz).	
power consumption	991 watts (110V), 1012 watts (220V) (printing); 553 watts (110V), 557 watts (220V) (copying); 70 watts (110V), 69 watts (220V) (powersave); 436 watts (110V), 411 watts (220V) (idle); 223 watts (110V), 219 watts (220V) (low power).	
dimensions (w x d x h)	HP LaserJet 9000/n/dn printer: 638 x 600 x 633 mm, HP LaserJet 9000mfp/9000Lmfp: 757 x 813 x 1220 mm.	
product weight	Out of package: HP LaserJet 9000 printer: 63.5 kg, HP LaserJet 9000n printer: 69.4 kg, HP LaserJet 9000dn printer: 76.2 kg, HP LaserJet 9000mfp/9000Lmfp: 138 kg. Packaged: HP LaserJet 9000: 62.79 kg, HP LaserJet 9000n printer: 83.1 kg, HP LaserJet 9000dn printer: 89.8 kg, HP LaserJet 9000mfp/9000Lmfp: 181.4 kg.	
printer management	The HP LaserJet 9000 series supports all advanced printer management features of HP Web Jetadmin. HP Web Jetadmin printer management software provides easy setup, use and management, extensive real-time diagnostics, remote visibility and printer control for any HP LaserJet printer connected via an HP Jetdirect printserver. HP Web Jetadmin provides the industry's most complete, multi-vendor printer management using the standard printer MIB, and supports both TCP/IP and IPX/SPX protocols. HP Web Jetadmin 7.0 is available via www.hp.com/go/webjetadmin . SNMP and the industry-standard printer MIB are compliant for network management compatibility. EWS (Embedded Web Server) built in web page for remote printer management.	
operating environment	Environmental ranges: operating humidity recommended: 20 to 80% RH, recommended operating temperature: 10 to 32.5°C, storage temperature: 0 to 35°C, storage humidity: 15 to 90% RH, noise level per ISO 9296, sound power LwAd: HP LaserJet 9000/n/dn printer: 7.1 B(A), HP LaserJet 9000mfp/9000Lmfp: 7.4 B(A) printing, 5.7 B(A) idle, sound pressure LpAm: HP LaserJet 9000/n/dn printer: 59 dB(A), HP LaserJet 9000mfp/9000Lmfp: 57 dB(A) printing, 40 dB(A) idle (operating position); 60 dB(A) printing, 40 dB(A) idle (bystander position).	
certifications	Compliant with: USA, FCC rules; Canada, EMC class B requirements; Japan, VCCI statement; Korea, EMI Statement; Finland, laser statement; Energy Star, regulatory standards: Compliant with: USA UL listed to UL 1950: 3rd edition, CDRH approved to 21CFR Ch. 1, Subch. J; Canada CUL certified to CSA 22.2 No. 950:1995; Germany TÜV licensed to EN 60950:1992, EN 60825-1: 1993 +A1; EU - Low Voltage Directive, CB Certificate to IEC 60950: 1991, +A1, A2, A3, A4; Singapore PSB Approval to IEC 60950: 1991; China CCCB Approval to GB 4943: 1991; Mexico NOM-NCYE Certified to NOM-019-SCFI-1994; Russia GOST licenses to IEC 60950.	
warranty	1 year on-site standard limited warranty	

* Available from Summer 2003

** HP LaserJet 9000/n/dn only

For more information contact the Hewlett-Packard internet website at: <http://www.hp.com>

For more information, please call your local HP sales office or representative: **Austria:** 0810/006080 (local rate call), **Algeria:** (0)61 56 45 43, **Bahrain:** 800 728, **Belgium:** (078) 15 20 30 (0.049€ EUR/min), **Luxembourg:** (+352) 263 160 34, **Bulgaria:** (+359) 2960 1940, **Croatia:** (+385 1) 60 60 200, **Czech Republic:** (00 420 2) 261 108 108 (Prague), **Denmark:** 45991700 or 70101125, **Egypt:** 532 5222, **Estonia:** (+372) 6505 263, **Finland:** (+358) 0205350 or 0205 350, **France:** (1) 69 82 6060, **Germany:** 0180 532 6222 (12 Cent/min), **Greece:** (01) 678 96 00, **Hungary:** (+36) 1 382-1111, **Iceland:** (354) 570 1000, **Ireland:** + 353 1 6158200, **Israel:** (972) 9 8304848, **Italy:** (02) 92121, **Kazakhstan:** +7 (3272) 980 824, **Latvia:** (371) 800 80 12, **Lithuania:** (370) 2 787 333, **Middle East:** 00971 4 883 4427, **Morocco (African Region):** +212 22 40 47 47, **Netherlands:** (020) 5476666, **Norway:** 22 735600, **Poland:** infolinia: 0-800 122 622, **Portugal:** (808) 206 001, **Romania:** (+401) 205 3300, **RSA:** (27)11 785 1000, **Russia:** +7 (095) 797 35 00, **Saudi Arabia:** 800 124 4646, **Serbia/Montenegro:** +381 11 334 21 02, **Slovakia:** +421-2-50222111, **Slovenia:** +3861 2307 420, **Spain:** (91) 6311600, **Sweden:** (08) 444 2000, **Switzerland:** 0848 88 44 66, **Tunisia:** 71 891 222, **Turkey:** +90 (216) 579 71 71, **UAE:** 8004910, **UK:** 08705 474747, **Ukraine:** +380 44 490 61 20.



ordering information

c8519a	hp LaserJet 9000
c8520a	hp LaserJet 9000n
c8521a	hp LaserJet 9000dn
c8523a	hp LaserJet 9000mfp (must be ordered with an optional output device)
q2622a	hp LaserJet 9000Lmfp (must be ordered with an optional output device)

supplies & accessories

c8568a	hp LaserJet 9000 multipurpose tray
c8532a	automatic duplex unit
c8531a	2000-sheet input tray
c8084a	3000-sheet stacker
c8085a	3000-sheet stapler/stacker
c8088a	multifunction finisher
j6054b	hp EIO hard disk - 10 GB
c9152a	printer maintenance kit, 110V units (350,000 pages)
c9153a	printer maintenance kit, 220V units (350,000 pages)
c8543x	hp LaserJet smart print cartridge (30,000 pages)
c8091a	hp staple cartridge, 5000 staples for the stapler/stacker
c8092a	hp 5000 staples cartridge for multifunction finisher
c9147a	16 MB flash DIMM
c7843a	SDRAM DIMMs, 100-pin 16 MB
c7845a	SDRAM DIMMs, 100-pin 32 MB
q1887a	SDRAM DIMMs, 100-pin 64 MB
c9121a	SDRAM DIMMs, 100-pin 128 MB
t1929aa	hp digital sending software 3.0, secure access
t1930aa	hp digital sending software 3.0, communications
t1931aa*	hp digital sending software 3.0, workflow
q1314a	hp analog fax accessory
nob8535a	hp autostore
j6058n	hp jetdirect 680n
j4167a	Token Ring

service & support

h7599a	next day on-site response, 1.8 million pages, valid 3 years**
h7694a	next day on-site response, high volume printing, valid 3 years**
h7603a	on-site response within 4 hours of call, 1.8 million pages, valid 3 years**
h7696a	on-site response within 4 hours of call, high volume printing, valid 3 years**
h7685a	next day on-site response, 1.8 million pages, valid 3 years
h7700a	next day on-site response, high volume printing, valid 3 years
h7690a	on-site response within 4 hours of call, 1.8 million pages, valid 3 years

The information contained in this document is subject to change without notice. All other products mentioned herein may be trademarks of their respective companies. Microsoft, Windows and MS Windows are U.S. registered trademarks of Microsoft Corporation.

© Copyright Hewlett-Packard 2003
Printed in the EU 05/03
5981-6676EEE