

Brochure

Simple, sophisticated productivity



HP FutureSmart 4.0

Make your enterprise devices easier to use
and even more productive—today and well
into the future.

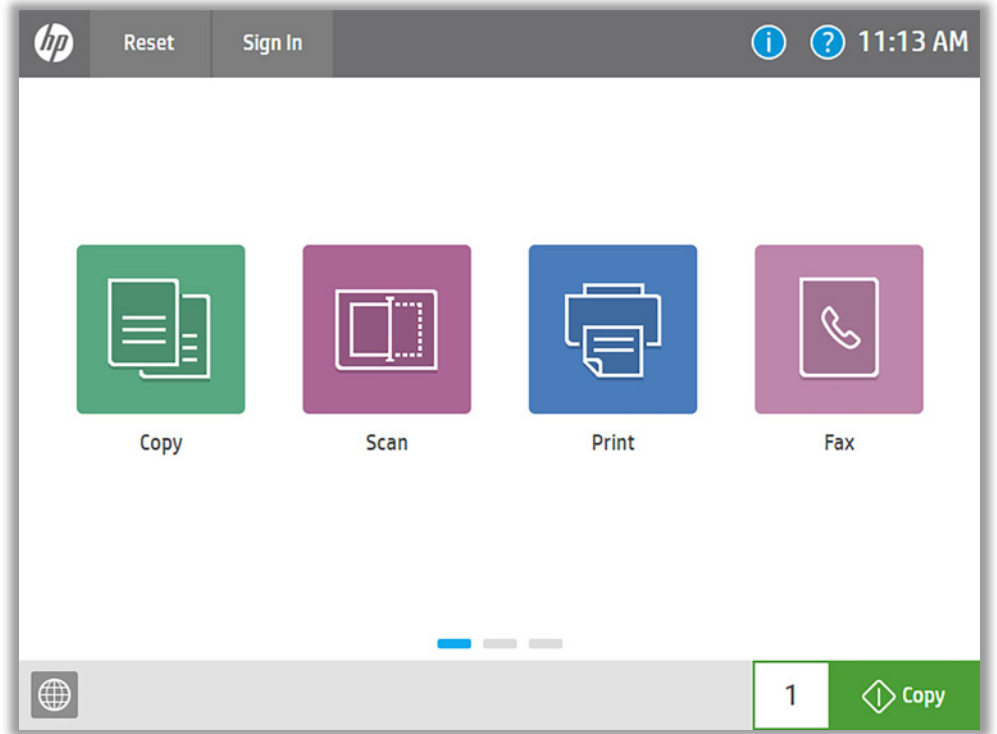


Clean and simple

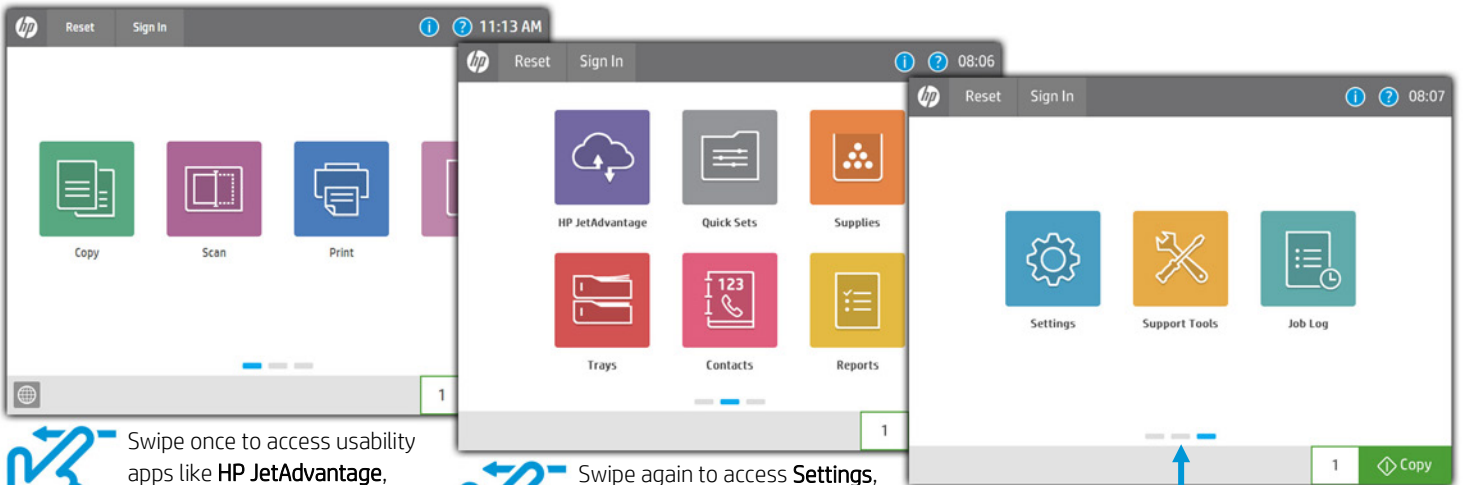
HP FutureSmart 4.0 firmware helps make it easy for your office users to be more productive. A modern, tablet-like interface keeps things simple and intuitive across your fleet of Enterprise devices. Improved image preview takes the guesswork out of scanning and copying. A scalable interface for the control panel improves future extensibility and allows new possibilities for customization, along with a robust set of new apps and usability features. A new message center, with more detailed information and helpful animations, makes it easy to address device events. Best of all, HP FutureSmart works with new and existing HP Enterprise devices, allowing you to prepare for the future, while enjoying the best HP has to offer today.¹

Upgrade to a modern interface

The simplified, modern-looking home screen displays just four core apps by default. Additional apps are easily accessed by swiping right to left, like with a smartphone or tablet.



Easily navigate a robust set of applications right out of the box



Swipe once to access usability apps like **HP JetAdvantage**, **Quick Sets**, and **Contacts**

Swipe again to access **Settings**, **Support Tools**, and **Job Log** apps

Blue and gray indicators help you navigate screens

Count on consistency across the fleet

Inconsistency across your fleet can lead to higher IT costs. With HP FutureSmart, you can maintain a reliable feature set and user experience across your fleet of enabled MFPs, printers, and network scanners. By providing consistent control panels, menus, messages, and features, HP FutureSmart makes it easy and intuitive to work among different devices.

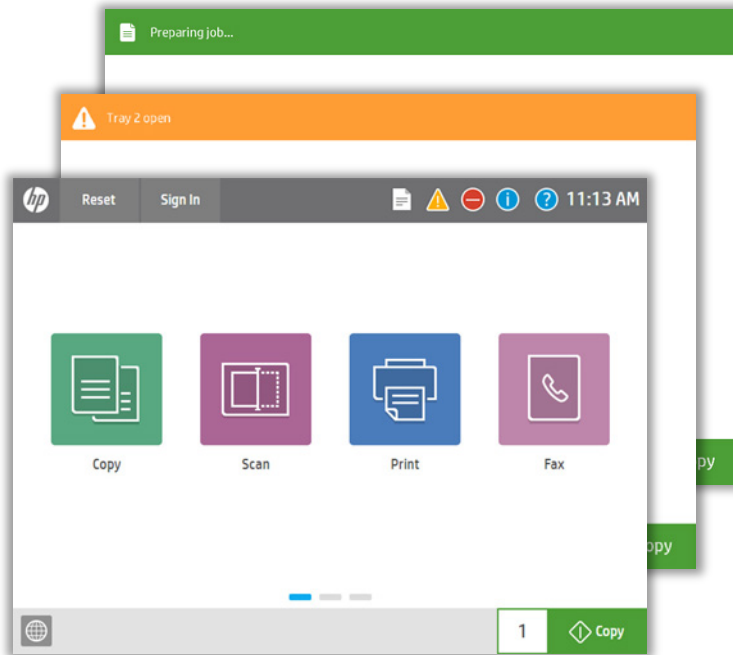
HP FutureSmart also makes your printing and imaging environment easier to manage. IT can use HP Web Jetadmin to centrally manage user interfaces and configure or update HP FutureSmart feature settings across all devices in the fleet.²



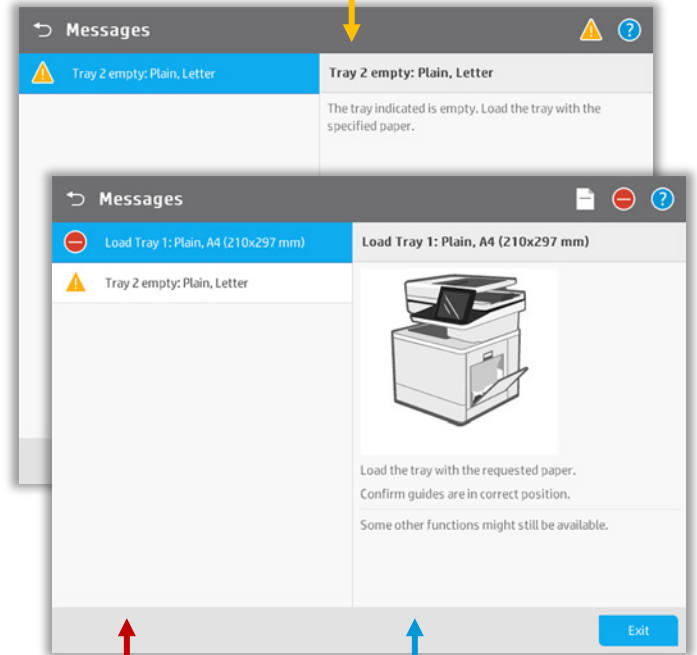
Easy to use new Message Center

The new Message Center is now easier to use than ever. Like on a smartphone or tablet, icons and temporary drop-down notifications appear at the top of the screen, in the masthead. Touch the notification text or icon to view the message.

Icons and notifications are color-coded to help users easily grasp the message context: General messages are blue, **Job Status** is green, and **Warnings** are orange.



Warning: Device issues which do not impact application functionality, such as empty trays



Stop/Attention: Device needs attention—an event that prevents the job from completing

Animations show how to resolve attention events

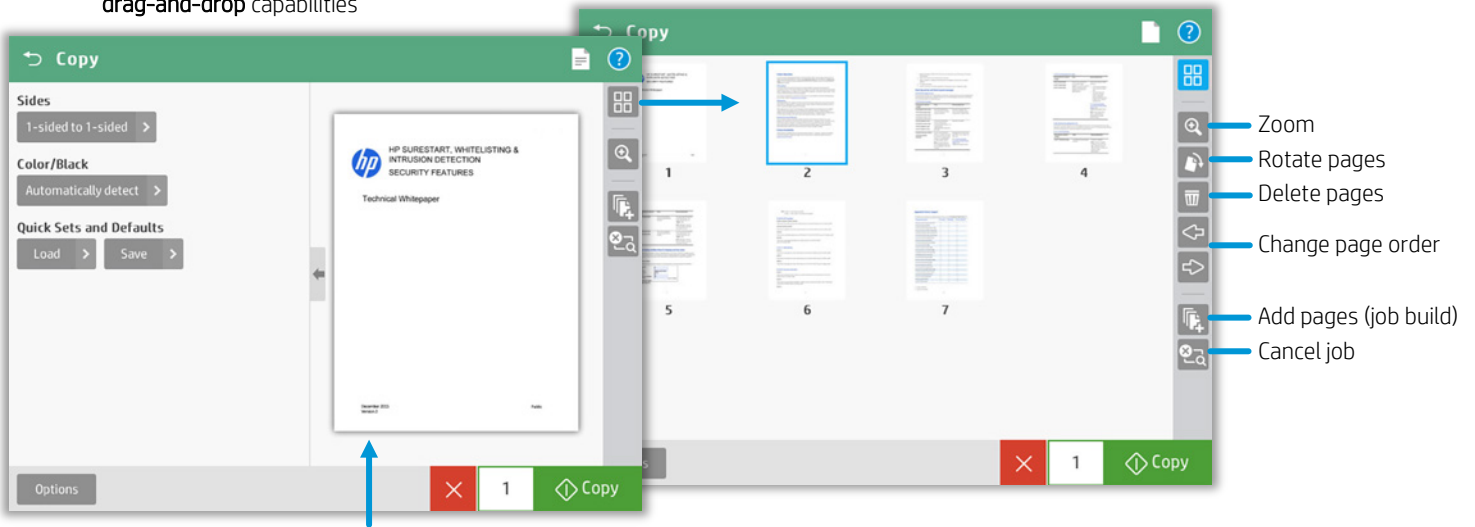
Improve productivity

Preview and edit documents right from the control panel—for both **copies** and **scans**



The new user interface enables **swiping, rotate, and drag-and-drop** capabilities

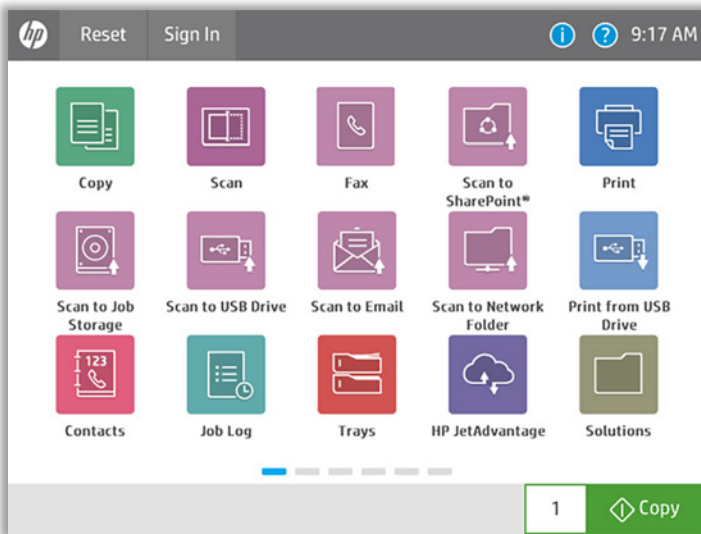
Now for both copies and scans, you can use the enhanced image preview feature to minimize steps and reduce errors. From the device's touchscreen control panel, view and edit your scan job before you send it to a network folder, fax, email, or USB device. Easily edit scans to look just the way you want them by instantly previewing and modifying before sending them to their destination.



You can start a **preview** prior to committing to the copy job

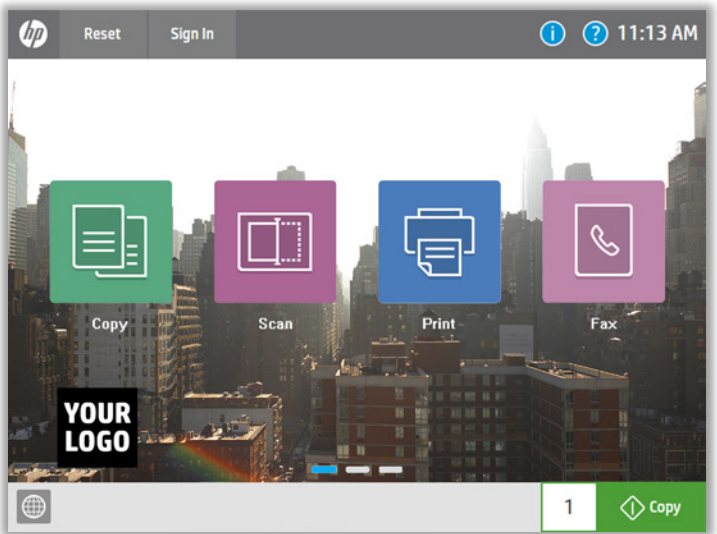
More control panel customization options

Meet the needs of your users by customizing what they use most. You can add screens for up to 15 icons per page and up to 10 pages.



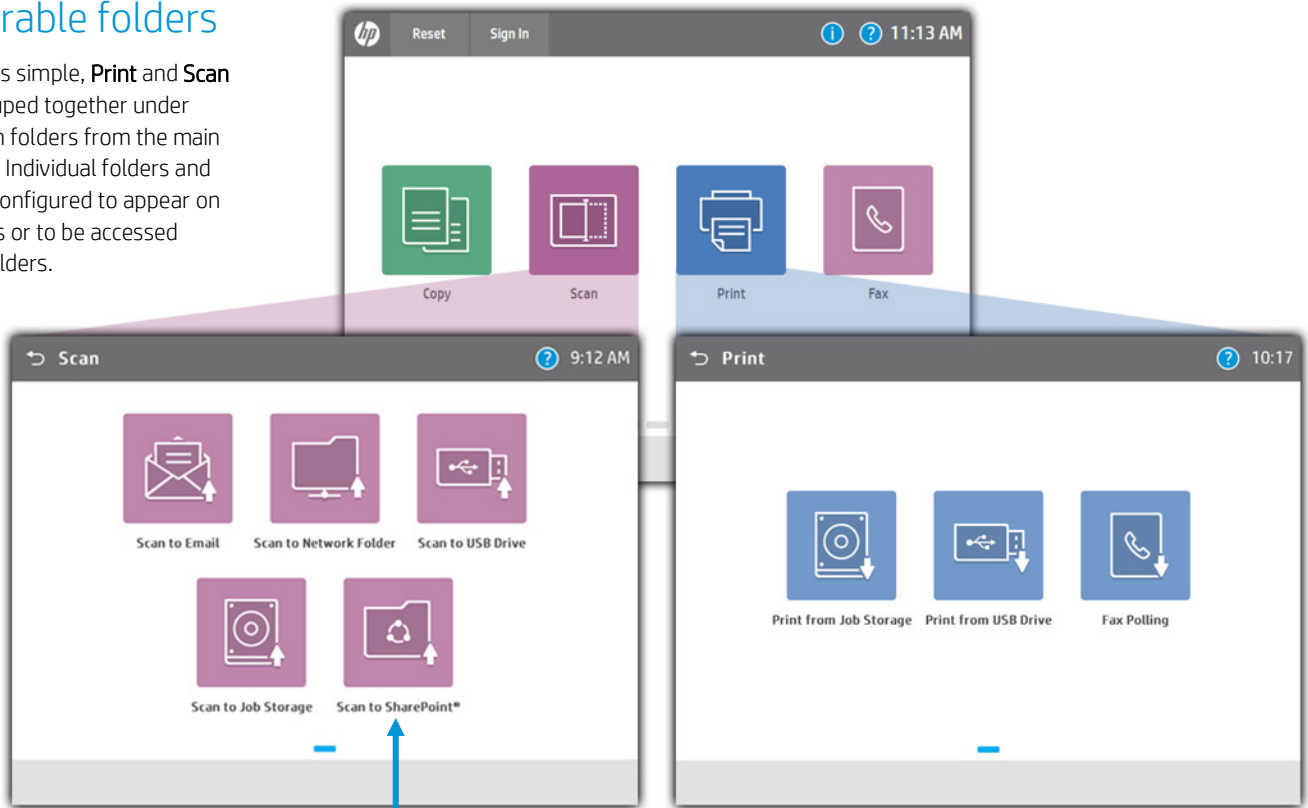
Use your logo and set wallpaper

You asked, we listened! Now you can add your company logo to the user interface and change the wallpaper.



Configurable folders

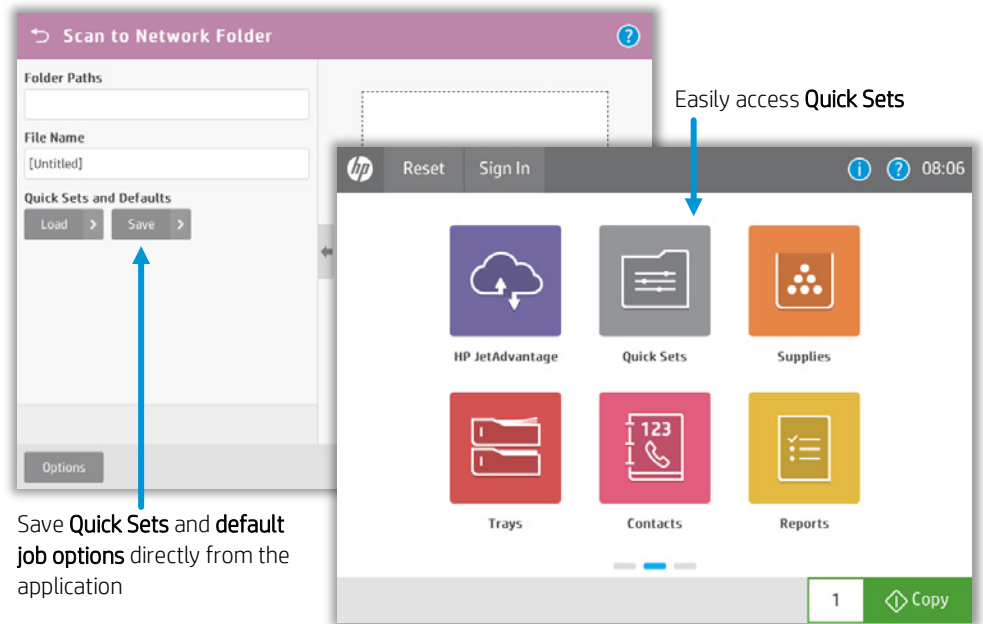
To keep things simple, **Print** and **Scan** apps are grouped together under print and scan folders from the main home screen. Individual folders and apps can be configured to appear on home screens or to be accessed from other folders.



New! Scan to SharePoint® and Microsoft® Office 365 standard on all Enterprise MFPs

Effortlessly create Quick Sets and job default enhancements

Quick Sets provide easy access to the configurations you use most, such as page size, resolution, and file format. Move individual Quick Sets to any screen or folder using the home screen customization feature.



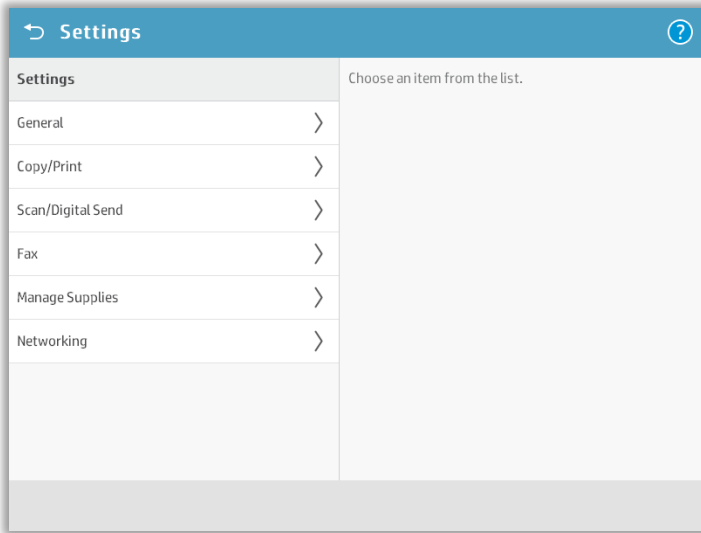
Save **Quick Sets** and **default job options** directly from the application

Easily access **Quick Sets**



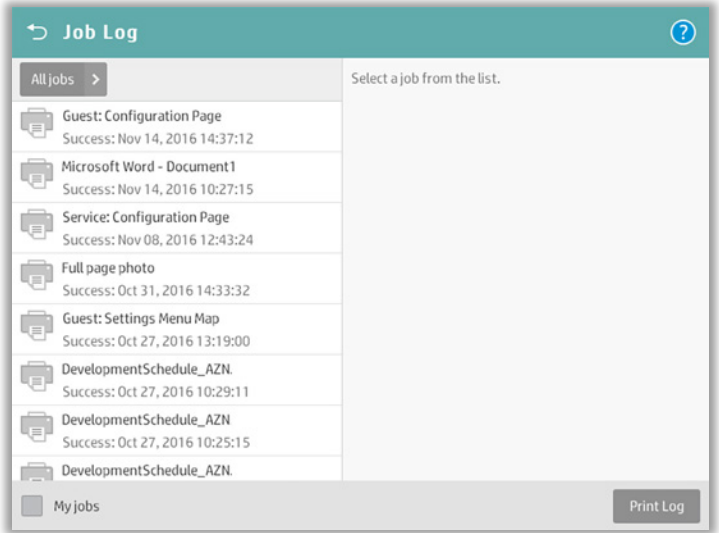
New Settings

The new **Settings** application consolidates all settings in one place and has simplified controls for easy device management.



Streamlined Job Log

Job Log is now its own folder. You can filter by job type, and My jobs/Print Log is readily available.



Centralized Contacts

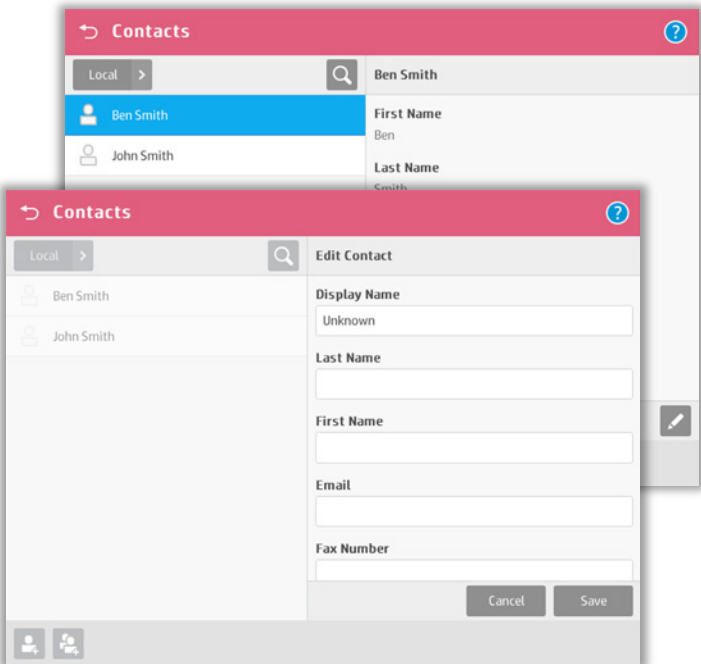
The **Contacts** app is now a centralized address book application that can help improve workflows.

Contacts are now grouped by recipient, whether you're sending to fax, email, or a folder. You can enter contact information from the **Contacts** application, from the Embedded Web Server (EWS), or even from HP Web Jetadmin (WJA). Access to the **Contacts** application can be based on user credentials restricted by the administrator. Import and export contacts for use on other HP devices.



Easy access to HP JetAdvantage

Quickly access **HP JetAdvantage** apps to help you get even more out of your device. To find out more about HP JetAdvantage, go to hp.com/go/jetadvantageondemand.



Future investment protection

IT enhancements

Updated Embedded Web Server

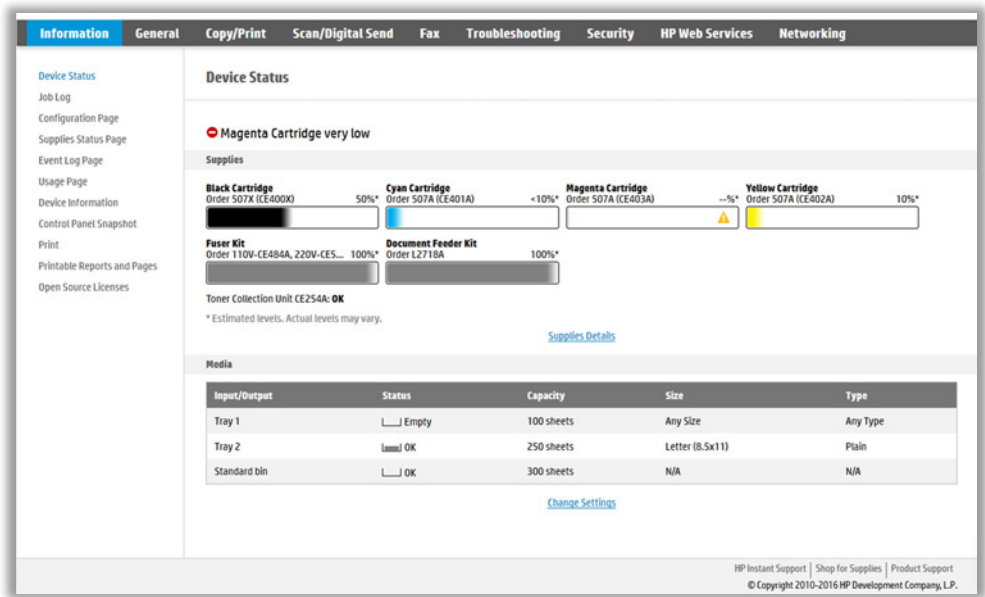
The look and feel for the EWS has been updated, but most of the settings and tabs remain the same.

The UI is now tailored to accommodate smart device displays, changing navigation options based on screen size. You can even now search the more robust help feature.

Enhanced security configurations

Security improvements include new password security features such as Account Lockout, password complexity, and minimum password length.

HP FutureSmart 4.0 provides new controls over individual secure communication encryption strengths as well as new secure FTP options for SSH file transfer over port 22, with options like SFTP (SSH File Transfer Protocol) and FTPS (FTP over SSL/TLS).



Fleet upgradable and extensible

Designed to be upgradable, HP FutureSmart firmware helps you keep HP printers, MFPs, and network scanners up to date. Get the latest security enhancements, as well as improvements to other productivity features. As technology evolves over time, your HP FutureSmart devices will be poised to adopt new features.¹

Device firmware has a significant impact on your imaging and printing environment. Like a PC's operating system, firmware coordinates hardware functions, runs the control panel, determines what features are available when faxing, emailing, or scanning a document, and provides device network security.

With traditional firmware, fleet-wide upgrades are cumbersome and time-consuming. There is typically no support for the new imaging and printing features and capabilities that are continually developed after a device is released.

HP FutureSmart allows your existing HP devices to be equipped with the same features as next-generation devices.¹ Rather than driving device obsolescence with technology changes, HP FutureSmart helps them remain useful and productive for years to come.

Easily deploy third-party solutions

HP FutureSmart devices use the HP Open Extensibility Platform (OXP). OXP creates a unified environment that makes it easy for third-party software companies to design solutions that integrate seamlessly with enabled imaging and printing devices.

Upgrade on your terms

Choose to upgrade HP FutureSmart with either minor service pack updates or major new feature upgrades. HP FutureSmart upgrades can be performed at the device, using the embedded web server, or across the fleet, using HP Web Jetadmin.²

Service pack updates

These maintenance upgrades allow customers to maintain feature stability for their fleet. Service pack updates do not affect existing device features, such as control panel layout and options. But they do provide important security and regulatory updates or operation fixes. New service pack updates are available multiple times throughout the year.

Major release upgrades

These upgrades allow customers to upgrade their compatible HP FutureSmart devices with the latest features and changes to device functionality.¹ A new major release is easily identifiable with the release number directly following the “HP FutureSmart” name (for example, **HP FutureSmart 4.0**).

Major release upgrades are made available to current HP devices when the next generation of HP FutureSmart features is introduced.¹

Learn more

hp.com/go/futuresmart

¹ Over time, some features enabled by new FutureSmart major release upgrades may not be available on older legacy devices if, for example, physical hardware capabilities limit new feature operation. HP FutureSmart 4 does not support 4-line displays or first-generation FutureSmart products, including M712, M750, M601/M602/M603, M551, M506 models with 4-line display, M552/M553 models with 4-line display, M604/M605/M606 models with 4-line display, CM4540 MFP, CP5525, M4555 MFP, Scanjet 8500, Scanjet 7000n.

² HP Web Jetadmin is available for download at no additional charge at hp.com/go/webjetadmin.

Sign up for updates
hp.com/go/getupdated



Share with colleagues

© Copyright 2017 HP Development Company, L.P. The information contained herein is subject to change without notice. The only warranties for HP products and services are set forth in the express warranty statements accompanying such products and services. Nothing herein should be construed as constituting an additional warranty. HP shall not be liable for technical or editorial errors or omissions contained herein.

Microsoft is a U.S. registered trademarks of the Microsoft group of companies.

4AA6-9365ENW, March 2017, Rev. 1

