

Brochure



Simple, sophisticated productivity

HP FutureSmart 5

Make your HP Enterprise devices easier to use and even more productive—today and well into the future.



Future investment protection



Fleet upgradable and extensible

Designed to be upgradable, HP FutureSmart firmware helps you keep your HP printers, MFPs, and network scanners up-to-date. Get the latest security enhancements, as well as improvements to other productivity features. As technology evolves over time, your compatible HP FutureSmart devices will be poised to adopt new features.¹

Device firmware has a significant effect on your imaging and printing environment. Like a PC's operating system, firmware coordinates hardware functions; runs the control panel; determines what features are available when faxing, emailing, or scanning a document; and provides device network security.

With traditional firmware, fleet-wide upgrades are cumbersome and time-consuming. There is typically no support for the new imaging and printing features and capabilities that are continually developed after a device is released.

HP FutureSmart allows your existing compatible HP devices to be equipped with the same features as next-generation devices.¹ Rather than driving device obsolescence with technology changes, HP FutureSmart helps them remain useful and productive for years to come.

- Uniquely upgradable to provide investment protection for your fleet
- Designed for OS-like upgradability by letting IT upgrade on their own maintenance schedule
- Maintains a consistent user interface, feature set, and device experience across the fleet for the end user
- The world's most secure devices with detection and recovery capability²

Easily deploy third-party solutions

HP FutureSmart devices use the HP Open Extensibility Platform (OXP). OXP creates a unified environment that makes it easy for third-party software companies to design solutions that integrate seamlessly with enabled imaging and printing devices.

Embedded security capabilities

HP FutureSmart firmware provides the latest solution, security, and fleet features for your compatible HP Enterprise devices. By upgrading to HP FutureSmart 5, you will be able to stay current with the features that enable the world's most secure devices.²

- **HP SureStart** validates the integrity of the BIOS code with **self-healing** by reverting to a golden copy if needed.
- **Whitelisting** confirms the authenticity of the firmware code with an **HP digitally signed certificate**, meeting government standards for security.
- **Run-time intrusion detection** with **self-healing** reboots automatically if attacked.
- **HP Connection Inspector** monitors and analyzes outbound network traffic with self-healing automatic reboot if anomalies are detected.

What's new in HP FutureSmart 5



Extend fleet consistency to new devices

HP FutureSmart 5 extends fleet consistency to the new HP LaserJet Enterprise 400 series devices, straight out of the box. These devices will be shipped with HP FutureSmart 5 installed at the factory, so they will have a similar UI, features, manageability, and security as the rest of the HP Enterprise fleet. In addition, all other newly manufactured, compatible devices will ship from the factory with HP FutureSmart 5 firmware pre-installed once the upgrade has been released; see the table below for the full list of compatible devices.¹

Schedule and stage firmware upgrades

The new Directed Update capability makes the process of upgrading your firmware easier. It offers the ability to stage firmware updates with HP Web Jetadmin and defer the installation until later. Device reboots after updating can also be scheduled. Plus, Directed Update offers the option to clean off depreciated or no-longer-needed solutions at the time of updating.

Devices compatible with HP FutureSmart 5

		Year released				
		2015–2017	2017–2018	2018–2019	2019	2020
Model number	556xh		765	E57540	E774XX	E725XX – ES 3.0
	M506x and xm (4.3")		780, 785	780, 785, E776XX, E776	M751	E724XX – ES 3.0
	M605X, M606X and xm		E725XX	774, 779, P779XX, P77440	E651XX	E774XX – ES 3.0
	M553x and xm (4.3")		E825XX	755, P75250	E676XX	E778XX – ES 3.0
	586		E778XX	M528	E6015XX	M507/M528
	M527		E876XX	E52645 E	E626XX	M607-9/M631-3
	M577		8500fn	M507	M856	M552-3/M577
	M607, M608, M609		N9120 fn2	E50145 E	M776	
	M631, M632, M633		E50045	E825XX		
	M652, M653		E55040	E876XX		
	M681, M682		E52545	E724XX		

Clean and simple

HP FutureSmart helps make it easy for your office users to be more productive. A modern, tablet-like interface keeps things simple and intuitive across your fleet of compatible HP Enterprise devices. Improved image preview takes the guesswork out of scanning and copying. A scalable interface for the control panel improves future extensibility and allows new possibilities for customization, along with a robust set of new apps and usability features. The message center, with detailed information and helpful animations, makes it easy to address device events. Best of all, HP FutureSmart 5 works with both new and existing compatible HP Enterprise devices, allowing you to prepare for the future, while enjoying the best HP has to offer today.¹

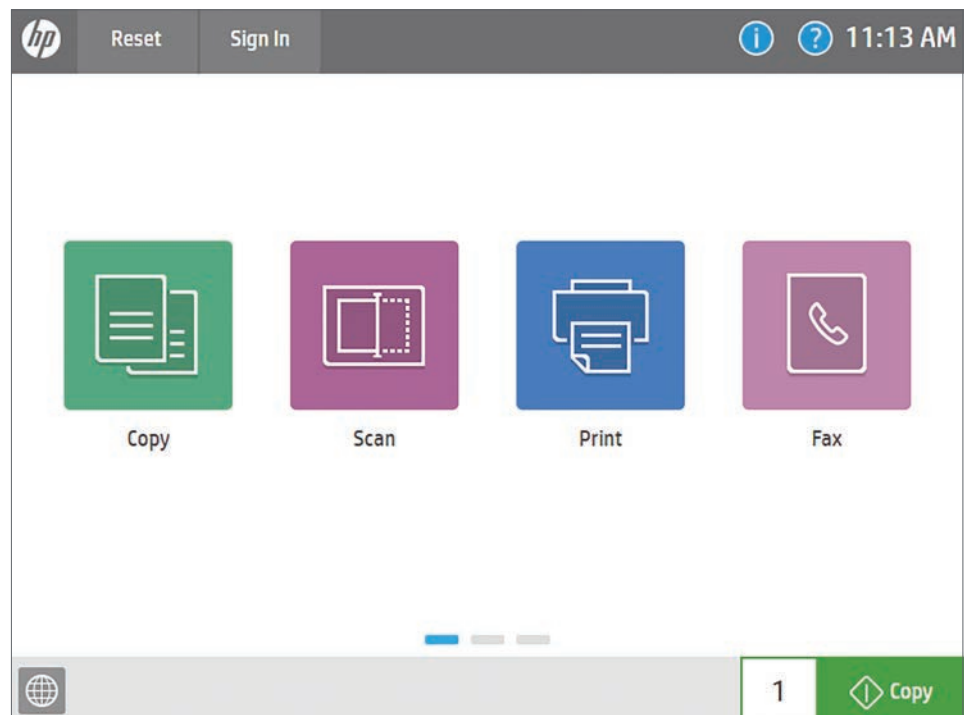
Count on consistency across the fleet

Inconsistency across your fleet can lead to higher IT costs. With HP FutureSmart, you can maintain a reliable feature set and user experience across your fleet of enabled HP Enterprise MFPs, printers, and network scanners. By providing consistent control panels, menus, messages, and features, HP FutureSmart makes it easy and intuitive to work among different devices.

HP FutureSmart also makes your printing and imaging environment easier to manage. With HP Web Jetadmin, IT can centrally manage user interfaces and configure or update HP FutureSmart feature settings across all compatible devices in the fleet.^{1,3}

Upgrade to a modern interface

The simplified, modern-looking home screen displays just four core apps by default. Additional apps are easily accessed by swiping right to left, like you would with a smartphone or tablet.



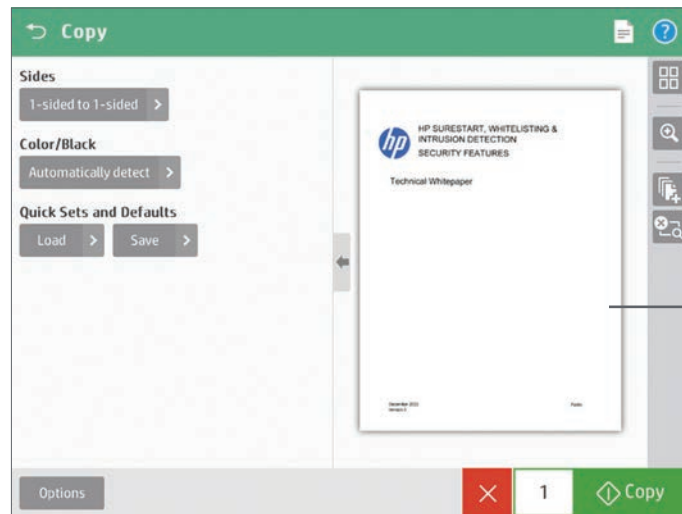
HP FutureSmart 5 continues to improve productivity

Preview and edit documents right from the control panel

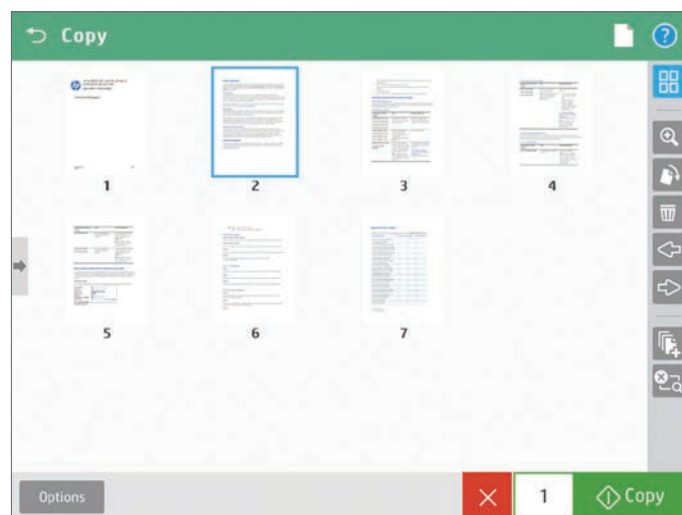
You can use the enhanced image preview feature for both copies and scans to minimize steps and reduce errors. From the device's touchscreen control panel, view and edit your scan job before you send it to a network folder, fax, email, or USB device. Easily edit scans to look just the way you want them by instantly previewing and modifying them before sending to their destination.



The user interface enables swipe, rotate, and drag-and-drop capabilities



You can start a **preview** prior to committing to the copy job



- Zoom
- Rotate pages
- Delete pages
- Change page order
- Add pages (job build)
- Cancel job

Expert Copy workflow

The Expert Copy UI option has been tailored to accommodate advanced copy workflows on one screen. It must be enabled via the Embedded Web Server (EWS).

Easily see and select paper tray and paper size options

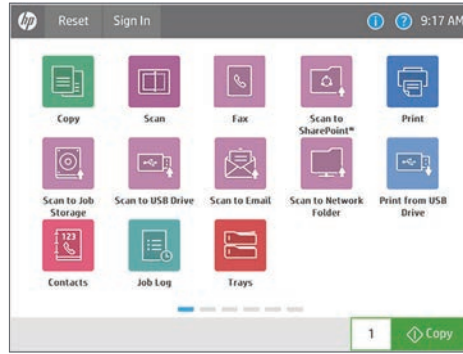
Load and save Expert Copy settings via Quick Sets to get the results you want—including document size, image, and quality settings—at the touch of button

Quickly select scan modes from a drop-down menu

The screenshot shows the 'Expert Copy' interface with a green header and a white body. The interface is divided into several sections: 'Quick Sets' with a 'Load' button; '1-sided to 1-sided' with a visual representation of two pages; 'Original Size' with an 'Any Size' button; 'Scan Mode' with a 'Standard document' button; 'Image Adjustment' with a 'Standard' button; and 'Optimize Text/Picture' with a 'Text' button. The right side features 'Color: Automatically detect', 'Quality: Professional', 'Staple: None', 'Hole Punch: None', and 'Reduce/Enlarge' with 'Automatic' selected and a '100%' scale. On the far right is the 'Output Paper Selection' panel with 'Automatically select' chosen, and a list of trays: Tray 1 (Any Size, Any Type), Tray 2 (Legal, Plain), Tray 3 (11x17, Plain), Tray 4 (Statement, Color Transparency), Tray 5 (Letter, Plain), and Tray 6 (Letter, Plain). The bottom bar includes an 'Options' button, a page count of '1', and a 'Copy' button.

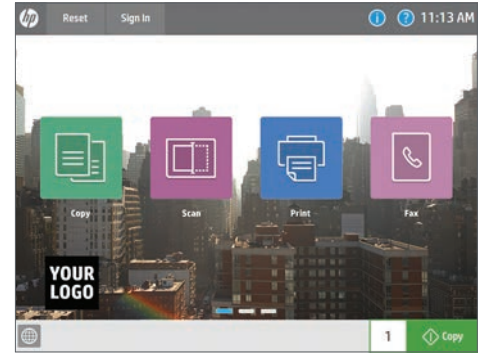
More control panel customization options

Meet the needs of your users by customizing what they use most. You can add screens for up to 15 icons per page and up to 10 pages.



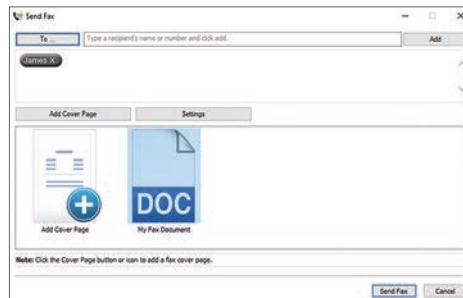
Use your logo and set wallpaper

You asked, we listened! Now you can add your company logo to the user interface and change the wallpaper.



Universal Fax Driver workflows

Track the number of pages faxed by each user; save copies of outgoing faxes to email, local folders, and FTP; and enable thumbnail images of the fax on the fax confirmation report.



Custom Color Manager

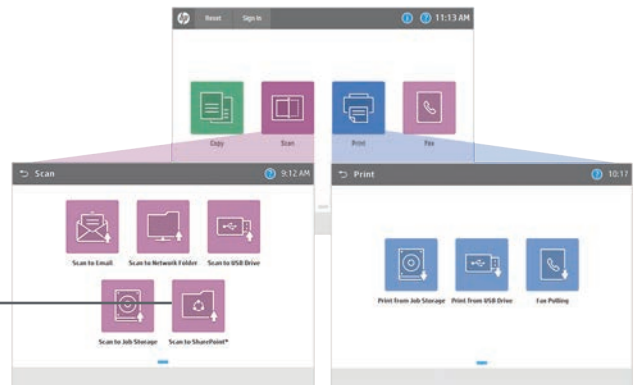
Set custom color profiles for your HP fleet devices. Easily determine whether custom color themes have been installed and identify all themes that have been enabled on the device via the device configuration page.

Customized Color Themes		
Color Theme	Date Modified	Description
Office (sRGB)*	10/2/2018	Text description
Vivid (sRGB)	09/30/2018	Text description that goes 2 lines
CMYK+	08/21/2018	Text description
Euroscale	08/14/2018	Text description

Configurable folders

To keep things simple, Print and Scan apps are grouped together under print and scan folders from the main home screen. Individual folders and apps can be configured to appear on home screens or to be accessed from other folders.

Scan to SharePoint and Microsoft Office 365 standard on all Enterprise MFPs



More device security and management features



Embedded Web Server

The Embedded Web Server (EWS) UI is tailored to accommodate smart device displays, changing navigation options based on screen size. You can even search the more robust help feature.

Enhanced security configurations

Security features include:

- Password security features, such as Account Lockout, password complexity, and minimum password length.
- Copy features, including predefined and customizable watermarks you can make available to end users. You can also deploy optional or admin-enforced custom and dynamic copy stamps.
- Network protection with the HP Connection Inspector, which examines outgoing network connections to stop suspicious requests and thwart malware.
- Controls over individual secure communication encryption strengths as well as new secure FTP options for SSH file transfer over port 22, with options like SFTP (SSH File Transfer Protocol) and FTPS (FTP over SSL/TLS).

Serverless Job Accounting

- Designed for small businesses with fewer than ten printers, Serverless Job Accounting provides simple statistics and quota functionality.
- Track and report mono and color copied sides, mono and color printed sides, scanned sides, and sent fax sides.
- Set quotas for print, copy, and digital send.

Make the most of your device investments through upgrades

HP FutureSmart firmware upgrades allow you to upgrade your compatible HP FutureSmart devices with the latest features, security, and changes to device functionality.¹ Major new releases are easily identifiable with the release number directly following the “HP FutureSmart” name (for example, HP FutureSmart 5.0).

HP FutureSmart upgrades can be performed at the device, using EWS, or across the fleet, using HP Web Jetadmin.³

Ensure your fleet of HP devices has the latest security and features by upgrading your firmware today.

Learn more and upgrade hp.com/go/futuresmart



Sign up for updates hp.com/go/getupdated

1. Over time, some features enabled by new FutureSmart major release upgrades may not be available on older legacy devices if, for example, physical hardware capabilities limit new feature operation. HP FutureSmart 5 does not support 4-line displays or first-generation FutureSmart products. For a full list of incompatible devices, visit hp.com/go/futuresmart.
2. HP's most advanced embedded security features are available on HP Managed and Enterprise devices with HP FutureSmart firmware 4.5 or above. Claim based on HP review of 2019 published features of competitive in-class printers. Only HP offers a combination of security features to automatically detect, stop, and recover from attacks with a self-healing reboot, in alignment with NIST SP 800-193 guidelines for device cyber resiliency. For a list of compatible products, visit hp.com/go/PrintersThatProtect. For more information, visit hp.com/go/PrinterSecurityClaims.
3. HP Web Jetadmin is available for download at no additional charge at hp.com/go/webjetadmin.

© Copyright 2017–2020 HP Development Company, L.P. The information contained herein is subject to change without notice. The only warranties for HP products and services are set forth in the express warranty statements accompanying such products and services. Nothing herein should be construed as constituting an additional warranty. HP shall not be liable for technical or editorial errors or omissions contained herein. Microsoft, Office 365, and SharePoint are registered trademarks of Microsoft Corporation in the United States and/or other countries.

