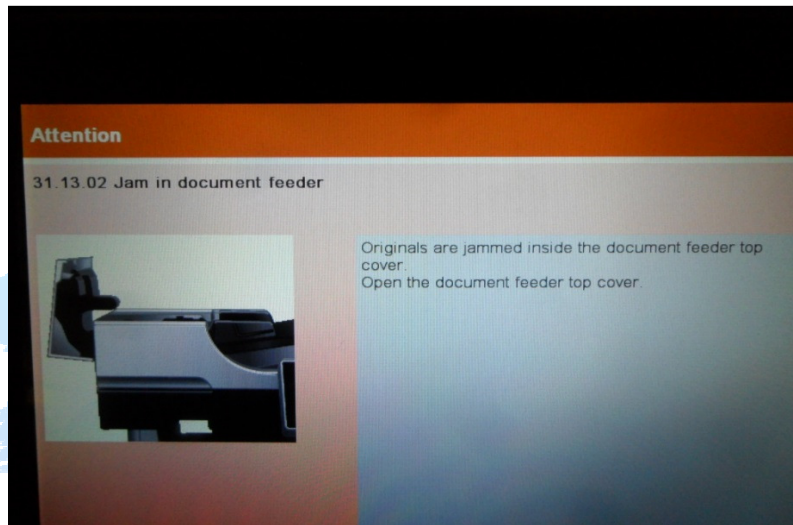
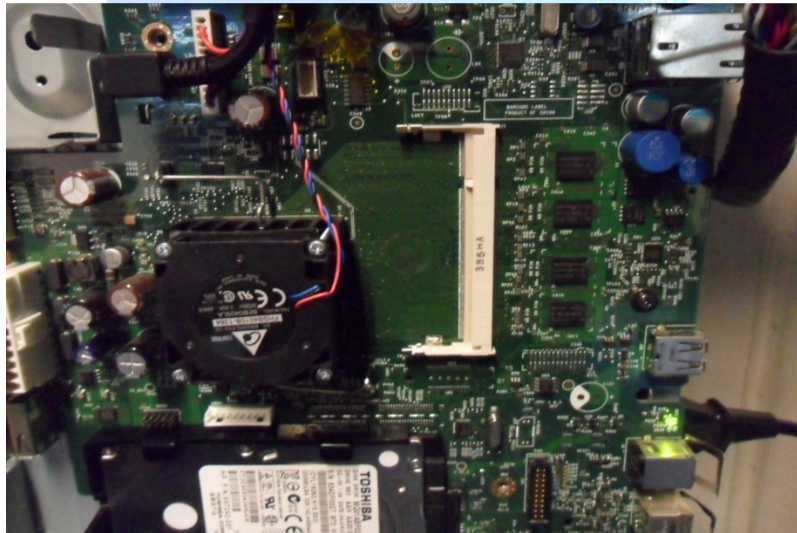


HP LaserJet FLOW M525C – 31.13.02 Jam in document feeder



If this error is a result of changing the printer's formatter board, be sure the 512 MB RAM chip was transferred from the original board to the replacement board. If not, the above error will appear.



If the error appears on its own, print out a configuration page to be sure the Total RAM count equals at least 1536 MB of ram. If not, (reads 1024 MB) the 512 MB memory will need to be replaced.

If the configuration page reads the minimum 1536 MB replace the ADF assembly CF116-67922

If the error persists, replace the formatter CF105-69001