



Removing, Reinstalling and Aligning the Main Drive Assembly HP CP5525 Printer

Introduction

When the Main Drive Assembly on the CP5525 is removed from the printer, care must be taken when this part is reinstalled to ensure the gears in this assembly do not become misaligned. There are two reasons why the Main Drive Assembly would need to be removed from this product:

- The part is defective and must be replaced with a new part. In this case, the new part is shipped with orange alignment pins in place to ensure the gears stay aligned until the assembly is installed on the printer.
- The Fuser Drive Assembly must be replaced and the Main Drive Assembly must be removed to access this part. In this case, where the Main Drive Assembly is removed and the same assembly is reinstalled, some additional steps need to be taken in order to maintain the alignment of the gears. This document explains the steps that must be executed in order to successfully remove and reinstall a Main Drive Assembly.

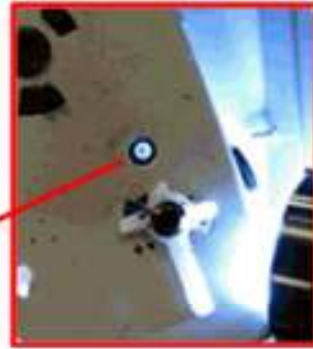
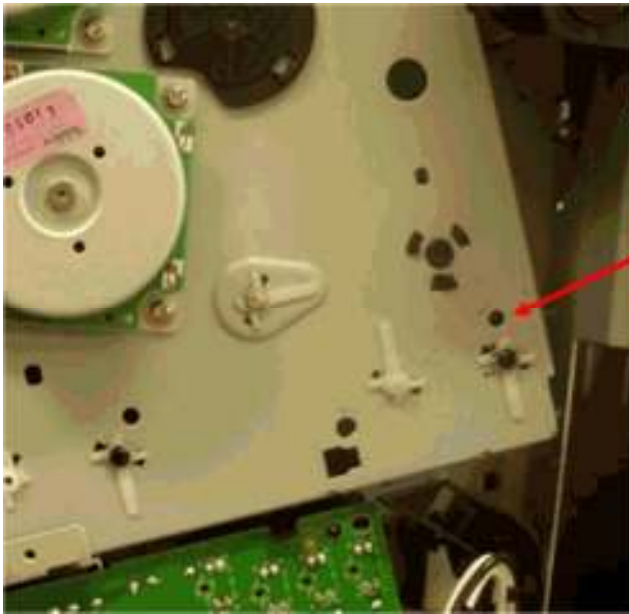
Remove the Main Drive Assembly

Follow the instructions in the Service Manual for preparing to remove the Main Drive Assembly through Step 16, but **DO NOT YET REMOVE THE MAIN DRIVE ASSEMBLY ITSELF.**

Checking and Realigning Main Drive Assembly Gears

To check for correct alignment of the gears, look through the alignment hole on the right end of the assembly. Shine a flashlight behind the assembly in order to see if all the holes are lined up as shown below.

Figure 1: Aligning Gears

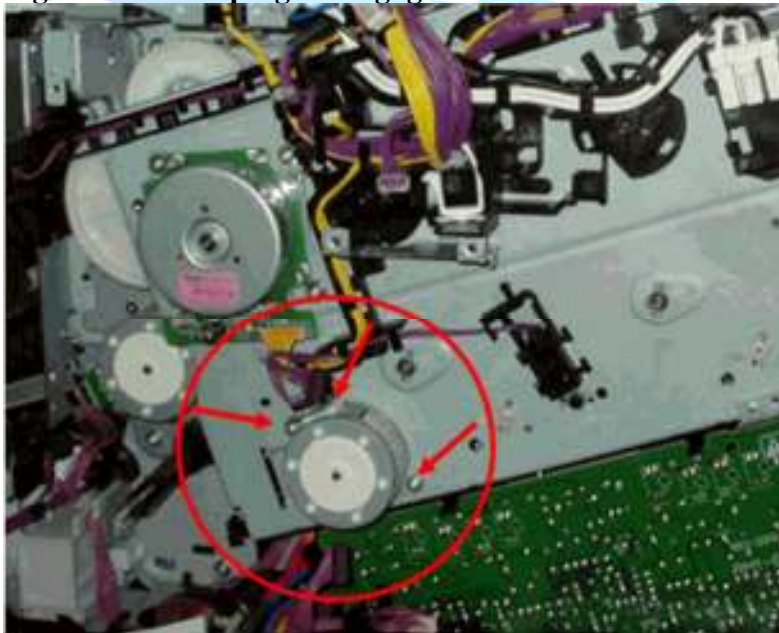


If the holes line up, the Main Drive Assembly gears are in correct alignment.

If the holes do not line up, follow these steps:

1. Disconnect one connector, remove two screws, and remove the Developing Disengagement Motor.

Figure 2: Developing Disengagement Motor



2. Locate the gear showing through the hole exposed by removing the motor as shown below. Rotate this gear manually using a small screwdriver until the holes shown in Figure 1 all line up. It may take many rotations to do this.

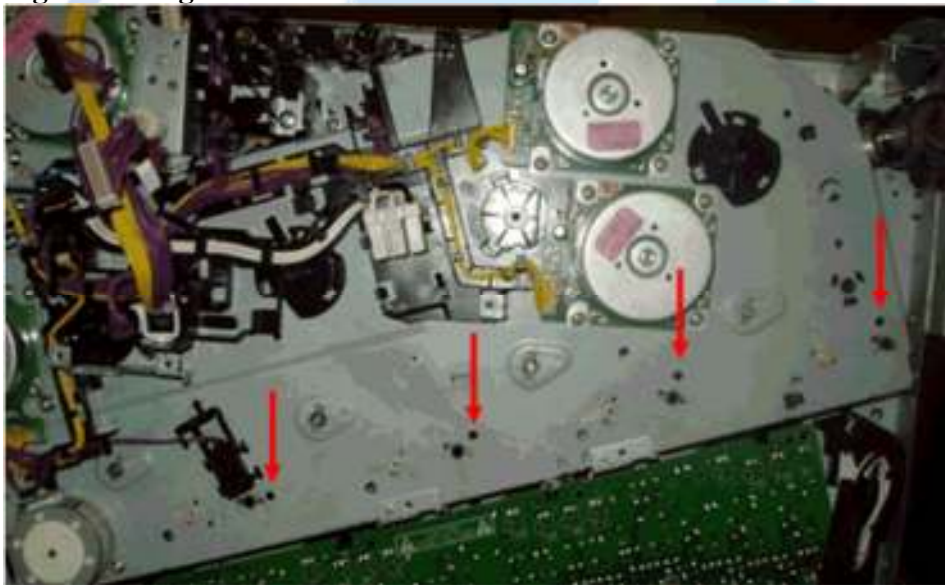
Figure 3: Gear rotation



Installing Alignment Pins

The Fuser Drive Assembly kit includes four orange alignment pins that must be inserted into the Main Drive Assembly before it is removed from the printer. The graphic below shows insertion holes for these alignment pins.

Figure 4: Alignment Pin Insertion Points



Install the alignment pins into the Main Drive Assembly as shown below. Affix electrical or scotch tape to the pins and the front of the assembly to keep them in place. Orange tape is shown below.

Figure 5: Alignment Pins Installed



Note that the handles of the pins are in different positions. All the pins are the same, but fit into the holes at different angles in order to clear the white plastic pieces adjacent to the holes (see circled part below). It is important that the base of the pins sit flat on the sheet metal so they are fully inserted in the gear train.

Figure 6: Alignment Pin Positions



Once the alignment pins are securely installed, follow instructions in the Main Drive Assembly Removal and Replacement section of the Service Manual, beginning with Step 17 to remove the assembly.

Reinstall the Main Drive Assembly

Follow the instructions in the *Removal and Replacement* section of the Service Manual, beginning with Step 1 in the *Install Main Drive Assembly* section. Follow the notes and tips for *Install a replacement assembly*. Be careful not to allow the alignment pins to fall out before the assembly is correctly and fully installed. Once the assembly is in place, remove the alignment pins.